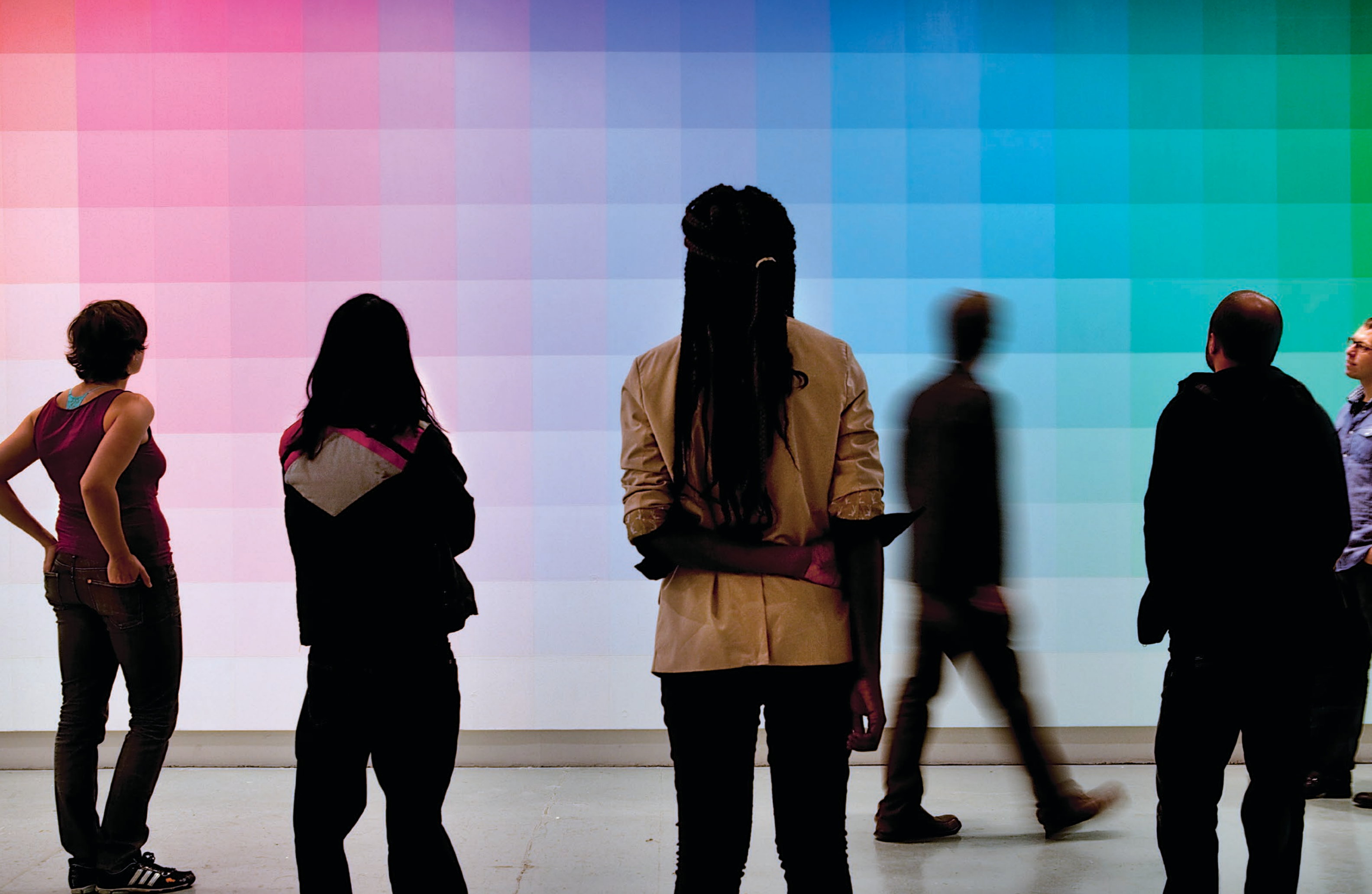


VISUAL SENSATIONS
THE PAINTINGS OF ROBERT SWAIN: 1967 – 2010
INSTALLATION VIEWS FROM THE HUNTER COLLEGE / TIMES SQUARE GALLERY



VISUAL SENSATIONS
THE PAINTINGS OF ROBERT SWAIN: 1967 – 2010
INSTALLATION VIEWS FROM THE HUNTER COLLEGE / TIMES SQUARE GALLERY

FOREWARD

This catalog documents the exhibition entitled, *Visual Sensations, The Paintings of Robert Swain: 1967 – 2010*, held at the Hunter College / Times Square Gallery from October 7th to November 13th, 2010. This exhibition was curated by Gabriele Evertz with the assistance of Teri Lehner, Jenny Liu and Rachel Stokoe. Their essays, research and organizational efforts made this exhibition possible. It is impossible to express my profound gratitude to these four individuals who orchestrated this exhibition with astonishing dedication and professionalism.

ARTIST DEDICATION

This catalog is dedicated to my wife, Nanny, always with me in my heart and mind.

ACKNOWLEDGEMENTS

This exhibition was made possible by donations from the Wolf Kahn and Emily Mason Foundation and by the Friends of the Hunter College Art Galleries.

Special acknowledgements are directed towards Frances and Ralph Dweck for their lifelong patronage without whom these paintings and this exhibition would not have been possible.

I would like to express my sincere gratitude to Gabriele Evertz for her remarkable curatorial expertise and persistent efforts to orchestrate this exhibition.

William C. Agee, Evelyn Kranes Kossak Professor of Art History, whose essay added a major dimension to this exhibition.

Matthew Deleget, Founder/ Director of Minus Space who made substantial contributions with his in-depth interview.

Rachel Stokoe and Peter Canale’s extraordinary video documentation, which allowed the public an intimate view of the artist in his studio.

Natalie Wedeking and Tim Laun for their creative design of the exhibition catalog.

Yao Zu Lu, photographer and web designer, for his substantial contributions.

Phi Nguyen, preparator, for his professional installation guidance and advice.

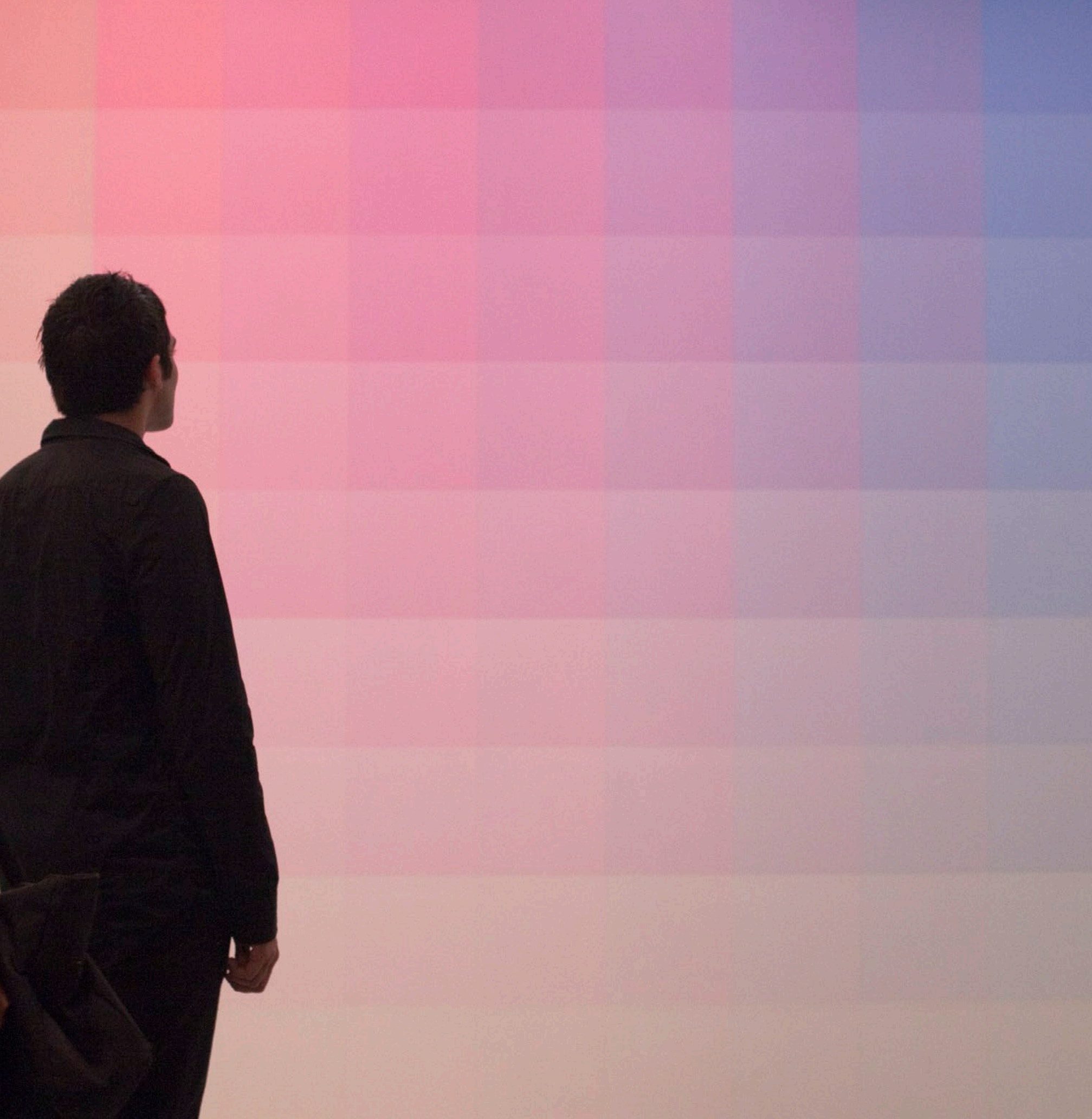
Sanford Wurmfeld, Phyllis and Joseph Caroff Professor of Fine Arts, a lifelong friend and advisor.

Thomas Weaver, Professor, Chair of the Department of Art, for his generous departmental contribution to the exhibition and catalog.

A sincere thank you to the installation crew, whose diligent work produced an exceptional exhibition: Phi Nguyen, Dan Crews, Pierre Obando, Changha Hwang, Phil Ladjanski, Arrick Underhill, Jake Hanitschak, Yao Zu Lu, Henry Lam, Jeffrey Lau, and William Wasserman.

Curators Tracy L. Adler and Mara Hoberman whose expertise facilitated this exhibition and catalog.

In addition, I am grateful for many individuals, who remain anonymous, that made major contributions to this exhibition; thank you.



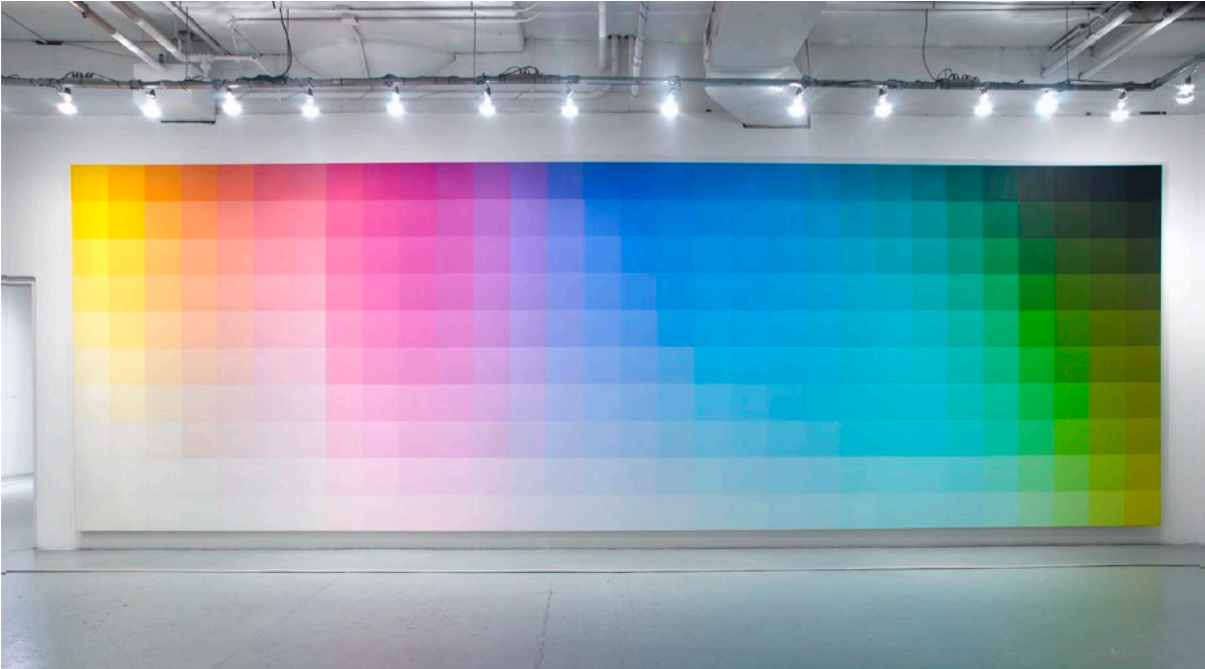
VISUAL SENSATIONS

THE PAINTINGS OF ROBERT SWAIN: 1967 – 2010

Robert Swain is one of the most significant color painters of his generation, a highly original and remarkable color theorist and a beloved professor of art. For more than forty-five years, Robert Swain has dedicated his practice to the investigation, application and experience of color sensations in abstract painting. He states: “Color is a form of energy derived from the electromagnetic spectrum that stimulates our perceptual processes and is instrumental in conveying emotions.” To gain insights into the magnitude of the ever-expanding vocabulary of color behavior and effects, Swain has devised a catalogue of close to five thousand color samples that serves as aid in formulating color relationships for his paintings. Swain’s concern is neither to expose a hidden hierarchy nor to illustrate a symbolic harmony of color. Rather, his impulse stems from a desire to make us see, thus, feel and think color at its most active, existential and most luminous. His works are not immersive. Instead, painted in precise, modular systems, they propose a practice of looking with heightened attentiveness—to engage us completely in the disquieting visual, cognitive, and intensely sensuous experience of color’s constant flux. His astonishing visual inventions of relational structures and his consistency in handling medium and methods are equaled by a high artistic standard that has not declined in over four decades. His works lead to a new understanding of color painting: we are invited to participate in the complication and fluidity of color experiences that appear to change, move and burn brightly in spectacular but private moments of pure lucidity.

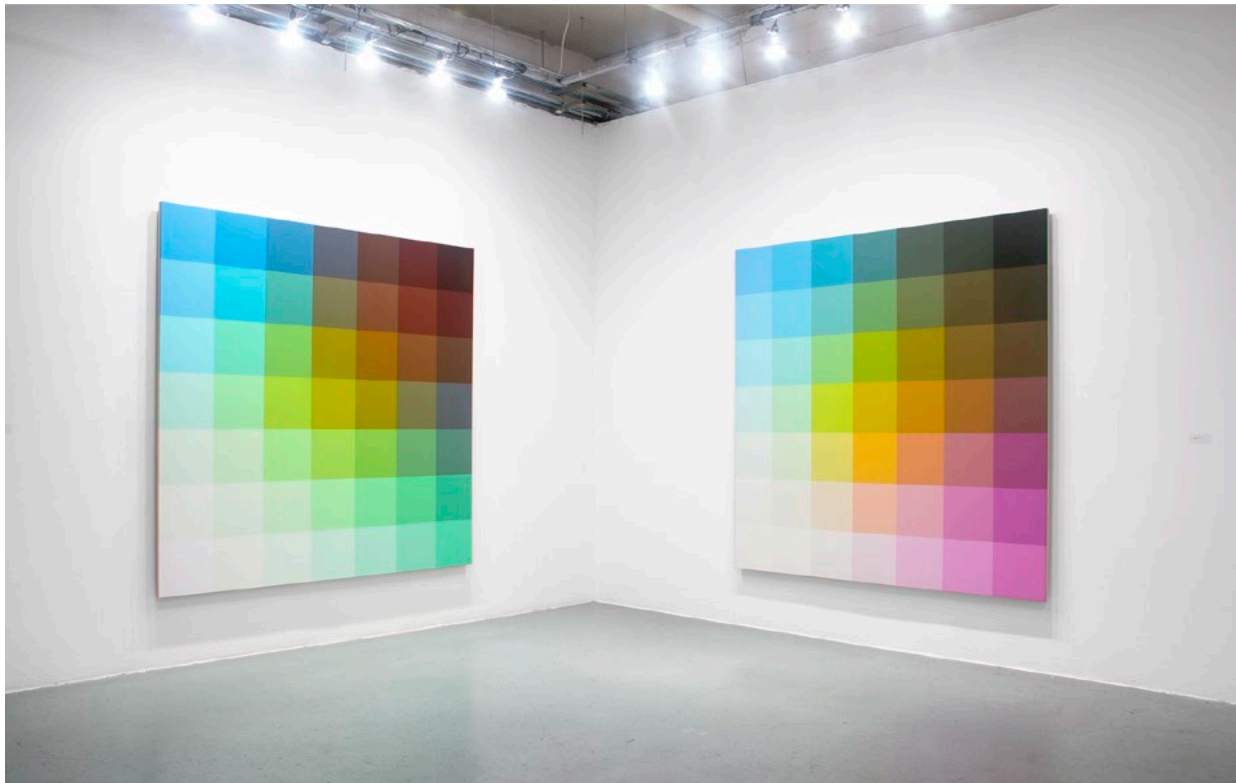
– Gabriele Evertz, Curator

INSTALLATION VIEWS FROM THE EXHIBITION

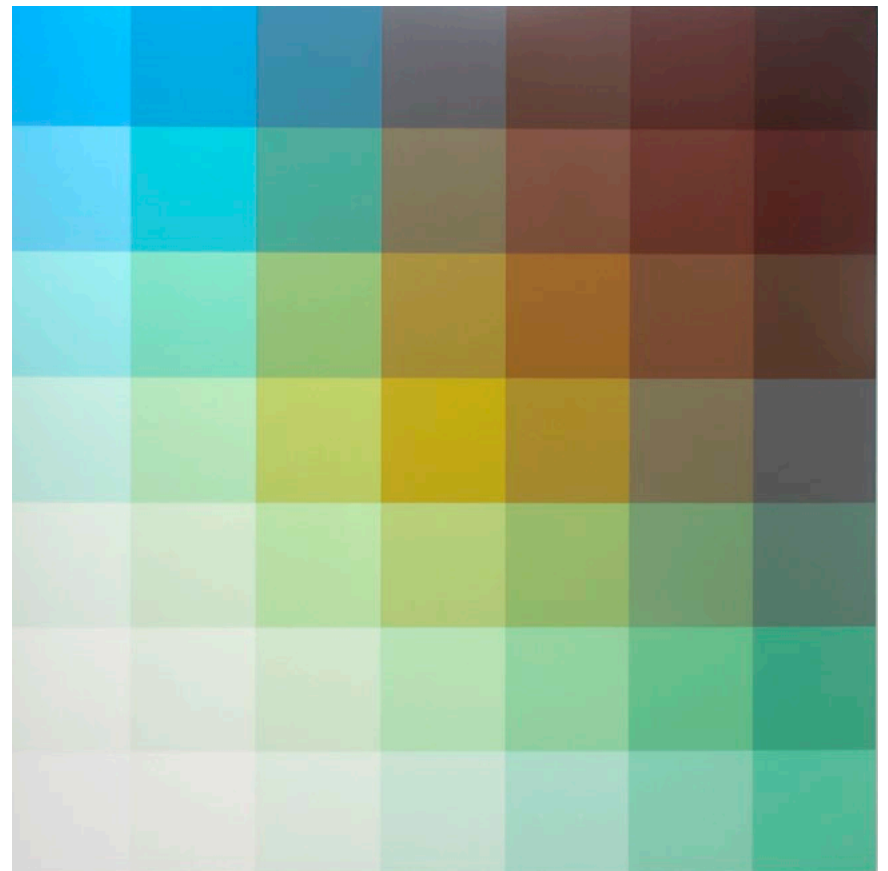


Untitled, 10 x 30, 10 x 30 feet, 1973
Acrylic on canvas
Collection of the artist

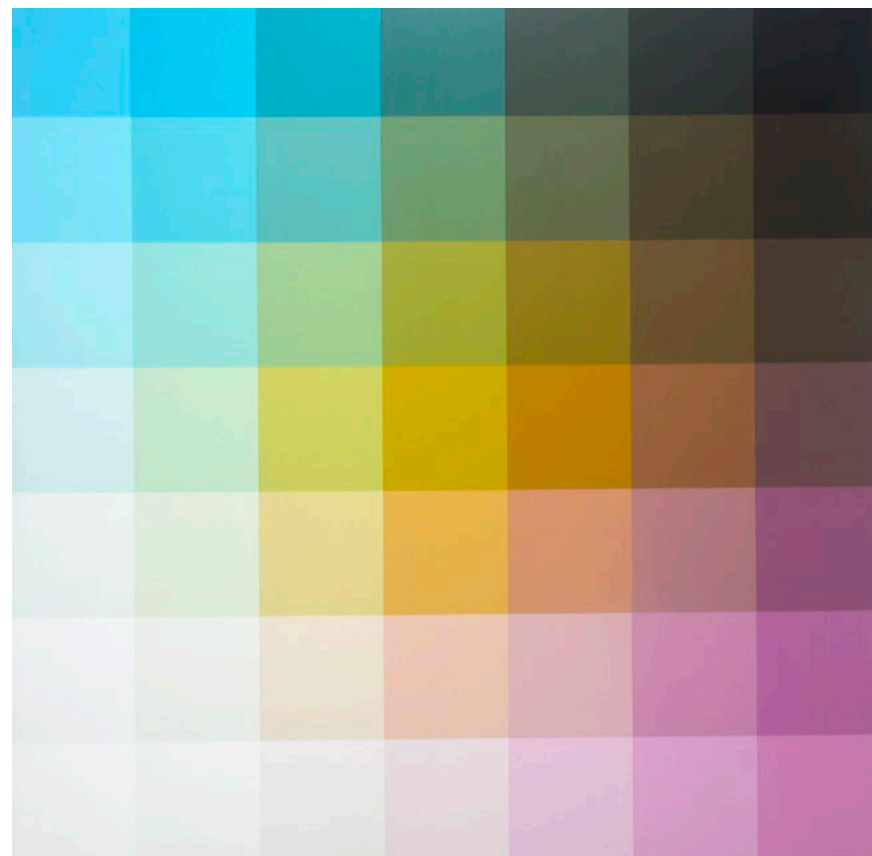
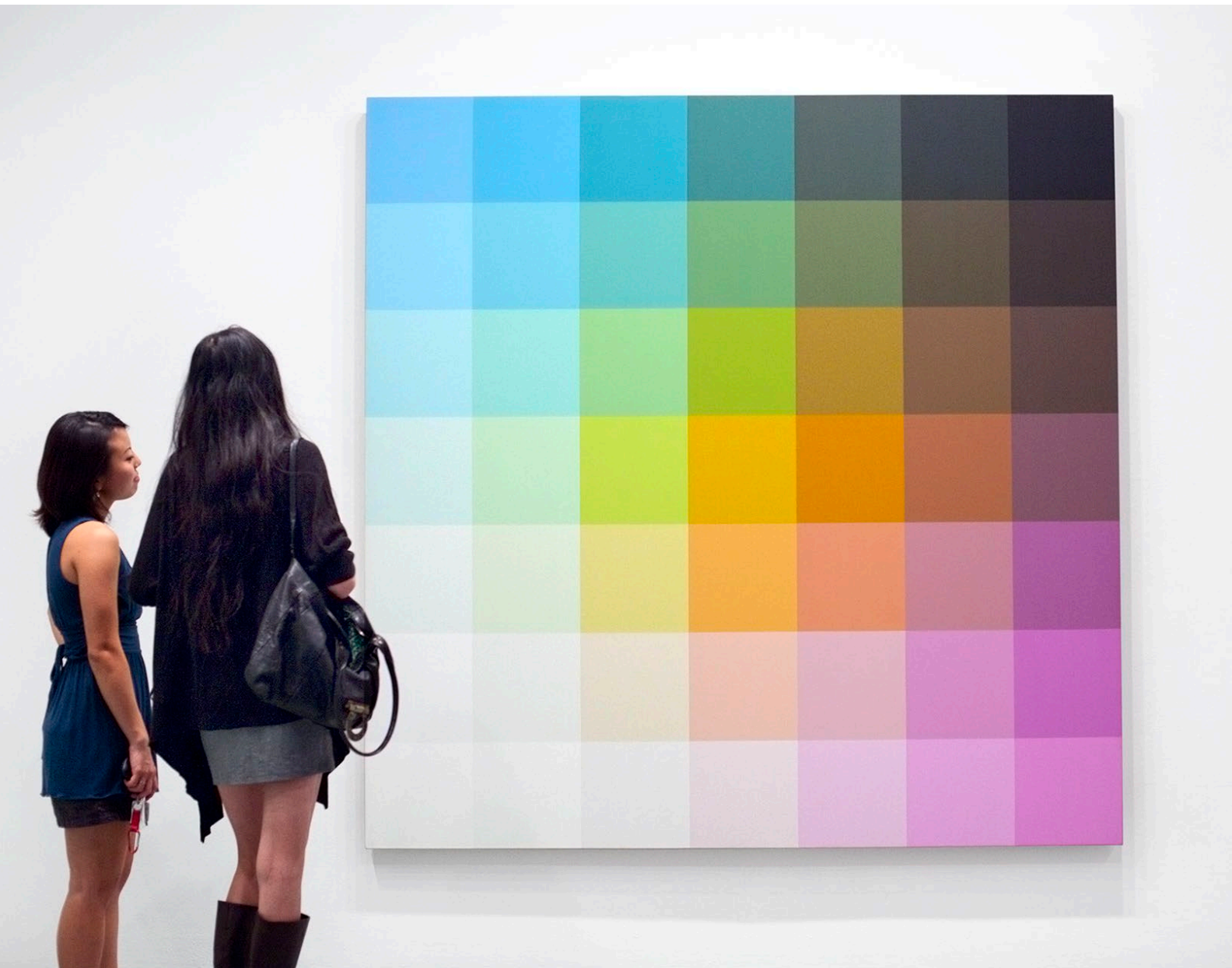




Untitled, 712, 7 x 7 feet, 1978 (left)
Untitled, 703, 7 x 7 feet, 1978 (right)
 Acrylic on canvas
 Collection of the artist



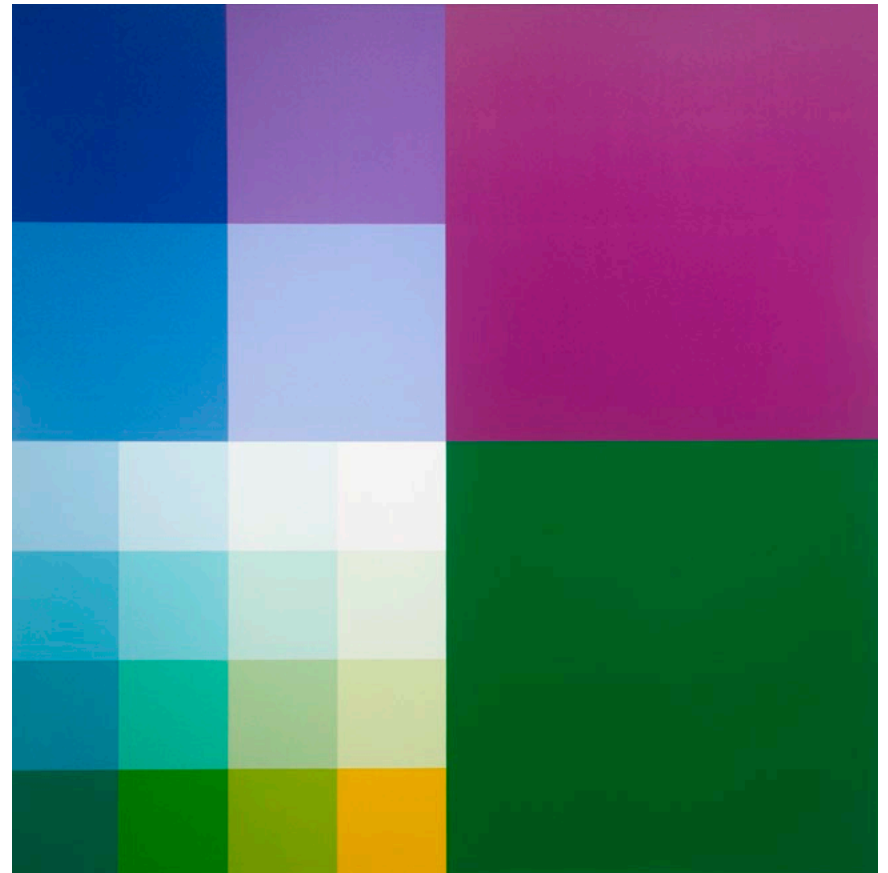
Untitled, 712, 7 x 7 feet, 1978
 Acrylic on canvas
 Collection of the artist



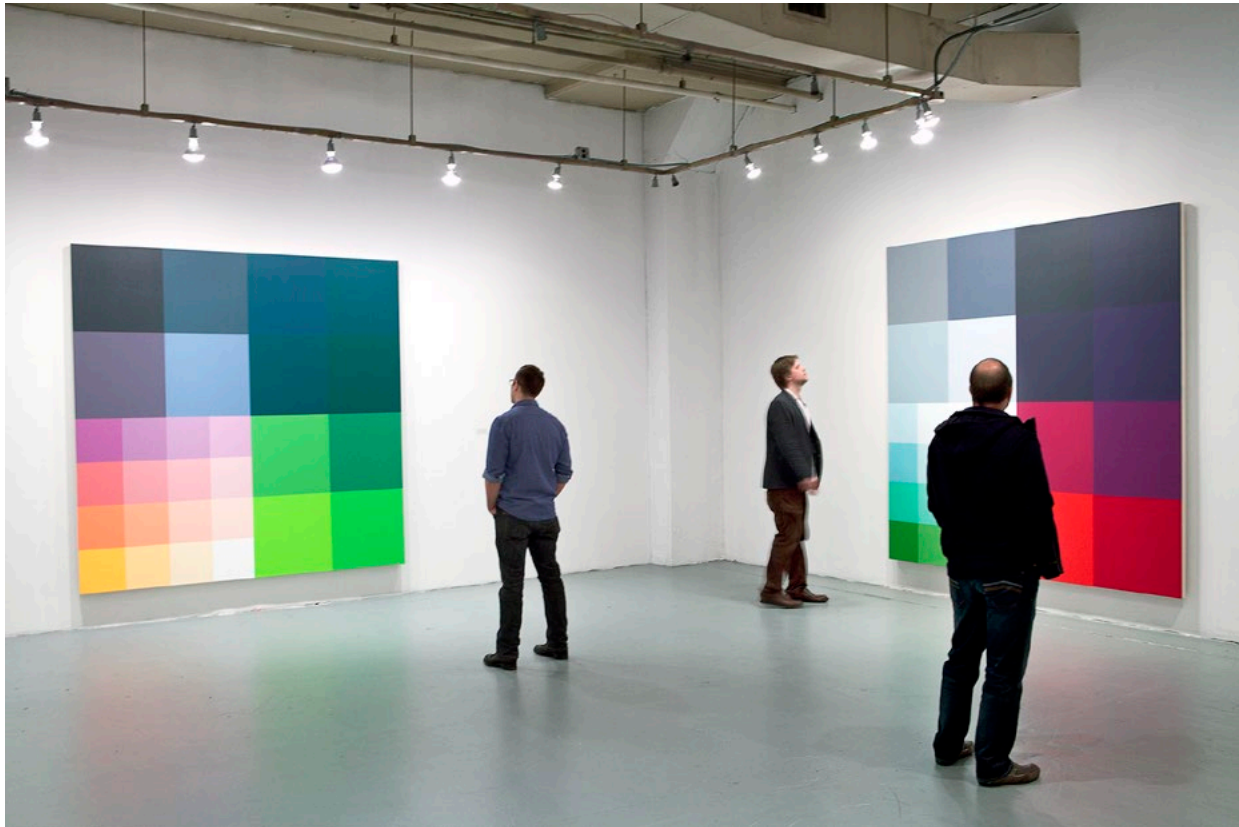
Untitled, 703, 7 x 7 feet, 1978
 Acrylic on canvas
 Collection of the artist



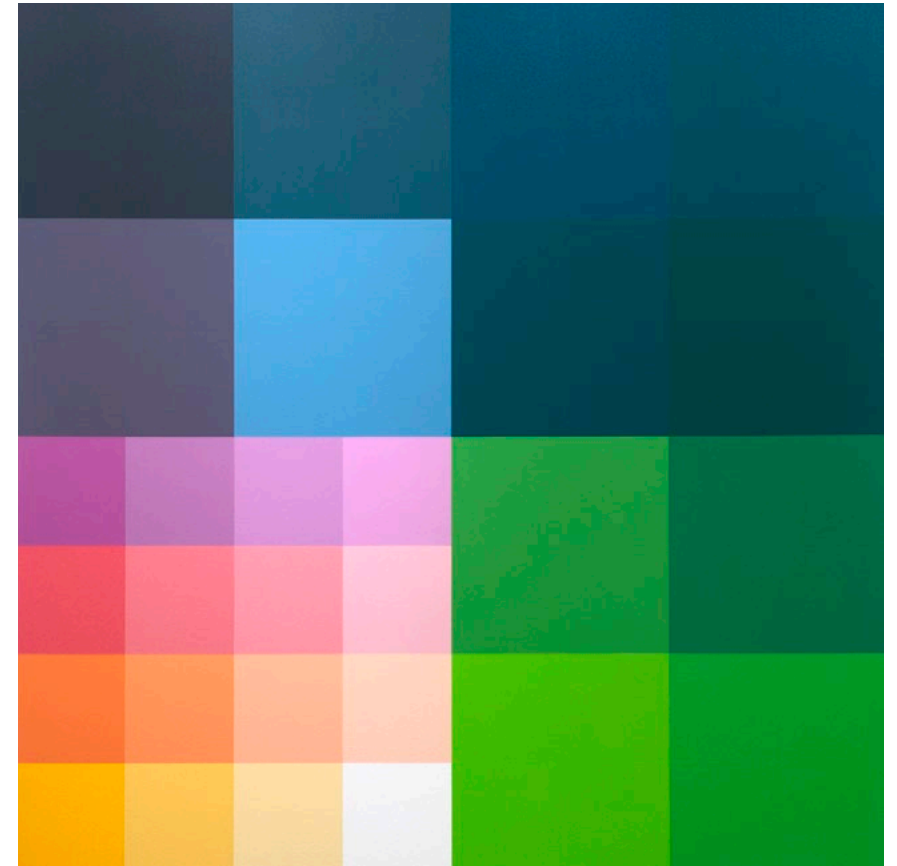
Untitled, 8x8-5A 4A 117B/117BX-4A, 8 x 8 feet, 1999-2001 (left)
Untitled, 8x8-3C Double Square 9N, 8 x 8 feet, 2005 (right)
 Acrylic on canvas
 Collection of the artist



Untitled, 8x8-117 5A 4A 117B/117B, X-4A, 8 x 8 feet, 2005-2006
 Acrylic on canvas
 Collection of the artist



Untitled, 8x8-3C Double Square 9N, 8 x 8 feet, 2005 (left)
Untitled, 8x8-27C, 8 x 8 feet, 2005-2006 (right)
 Acrylic on canvas
 Collection of the artist



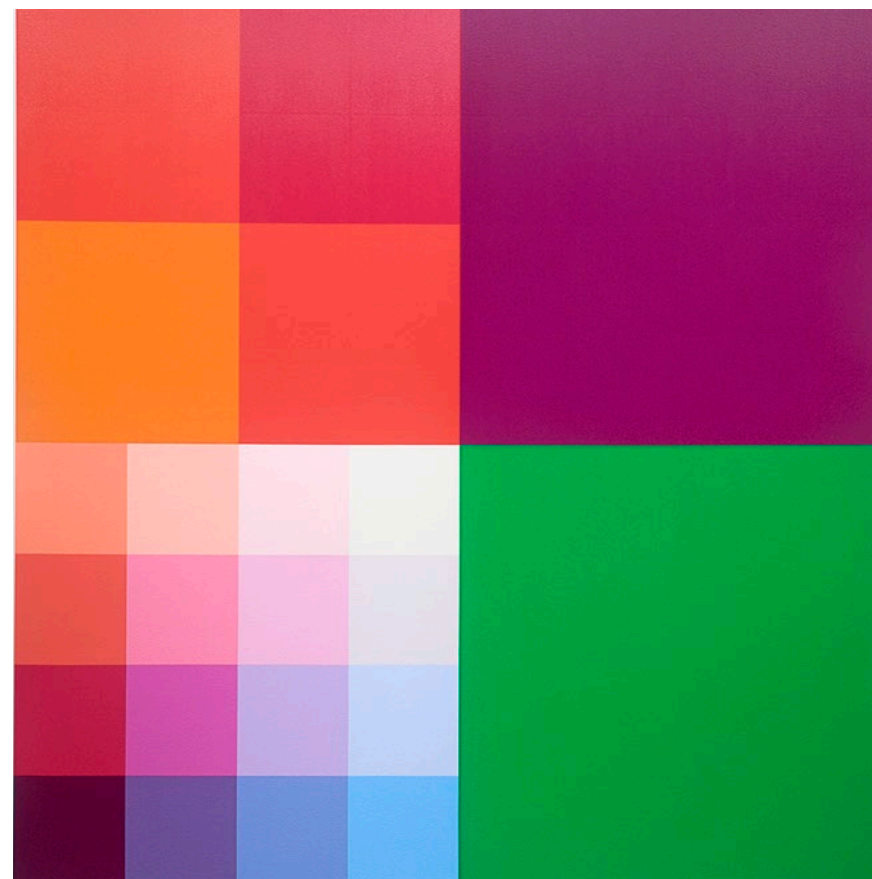
Untitled, Double Square 9N, 8 x 8 feet, 2005
 Acrylic on canvas
 Collection of the artist



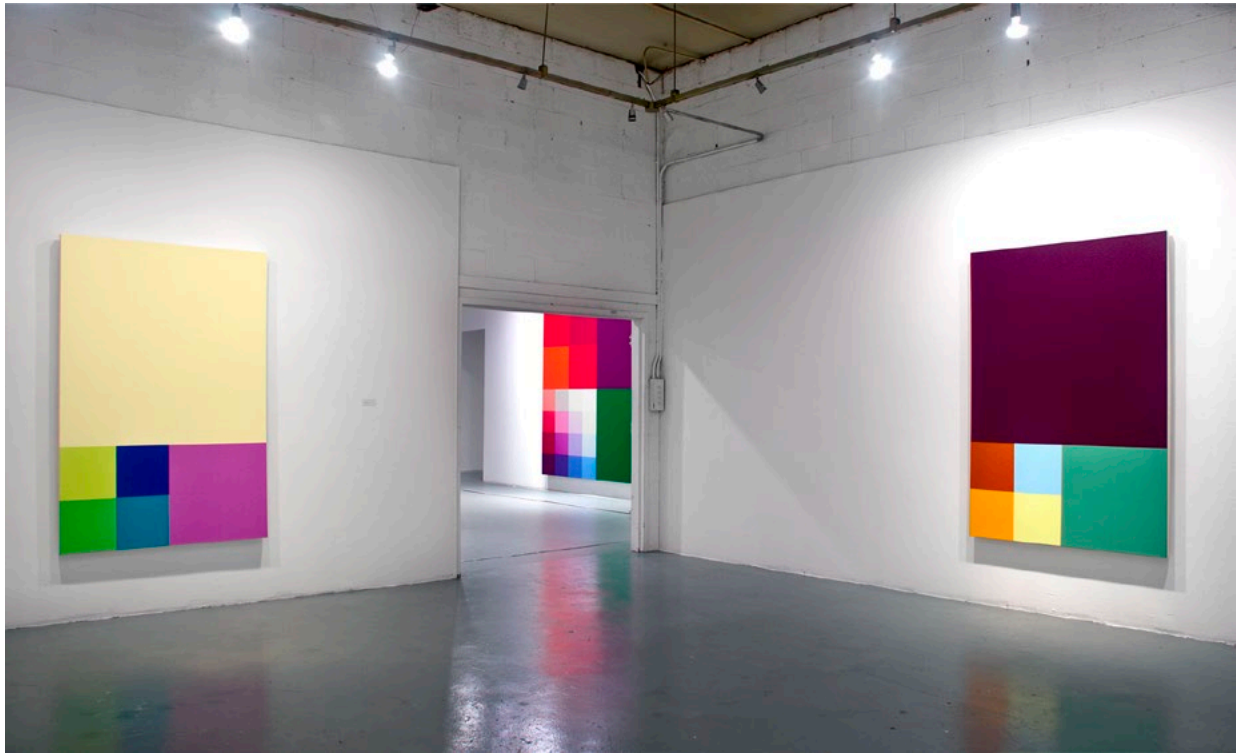
Untitled, 8x8-3C Double Square 9N, 8 x 8 feet, 2005 (left)
Untitled, 8x8-27C, 8 x 8 feet, 2005-2006 (right)
 Acrylic on canvas
 Collection of the artist



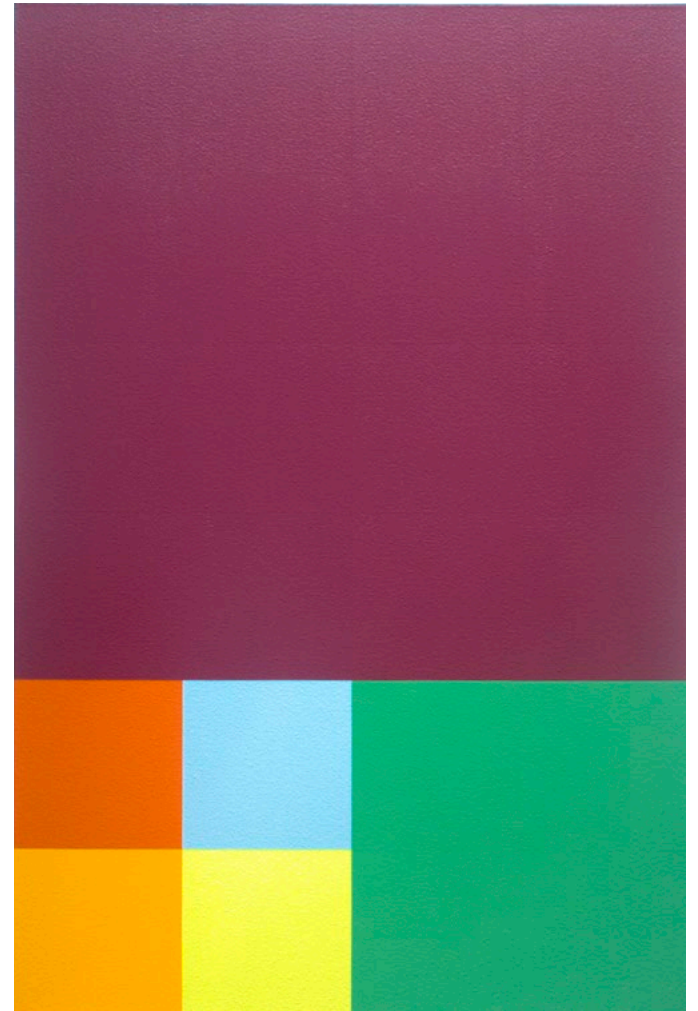
Untitled, 8x8-27C, 8 x 8 feet, 2005-2006
 Acrylic on canvas
 Collection of the artist



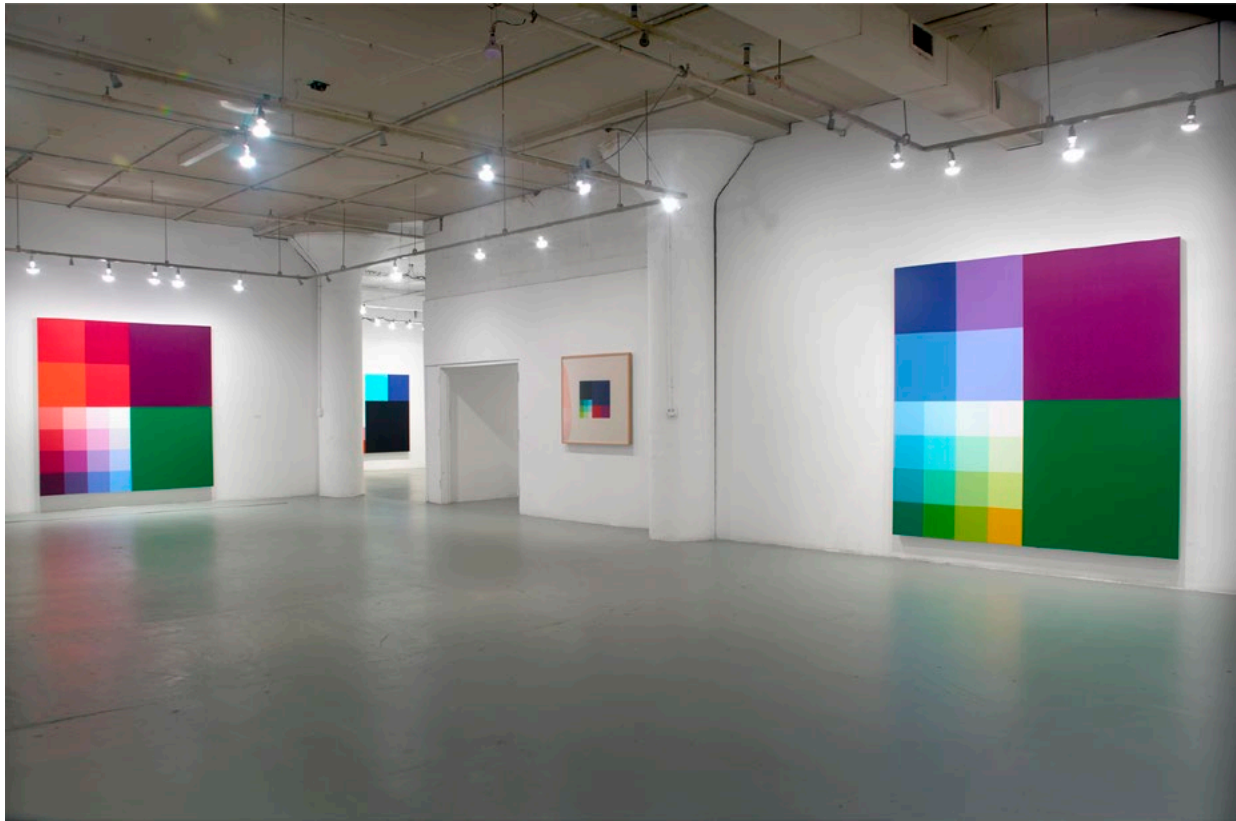
Untitled, 8x8-5A RO#3, 8 x 8 feet, 1999-2001
 Acrylic on canvas
 Collection of the artist



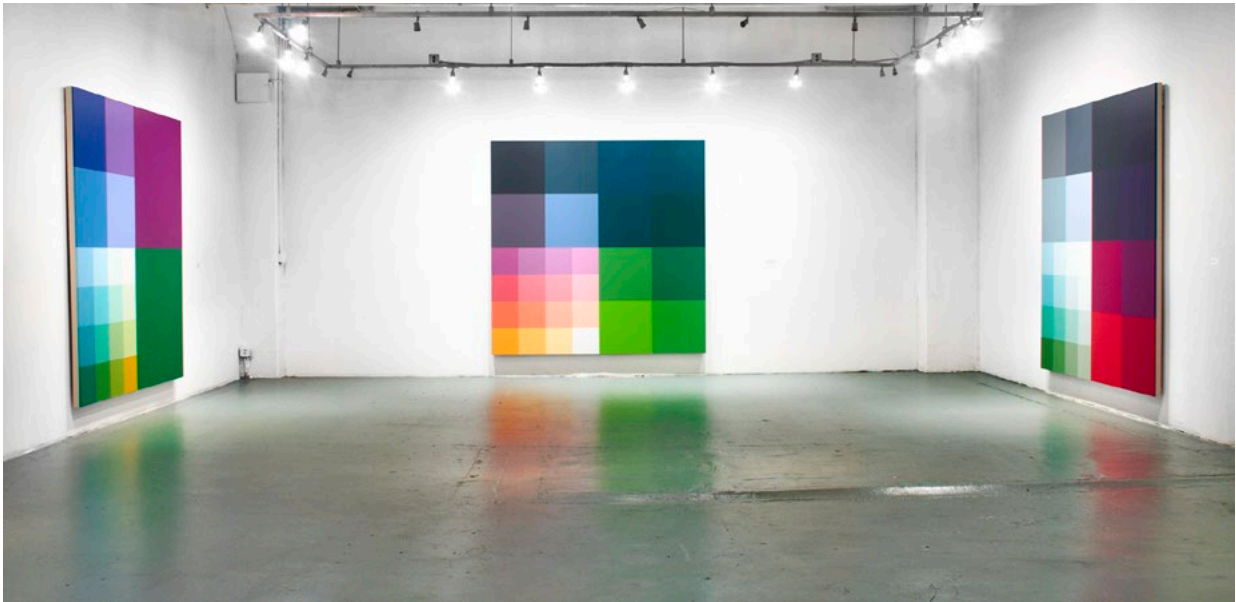
Untitled, 6x4-08, 6 x 4 feet, 1986 (left)
Untitled, 6x4-07, 6 x 4 feet, 1986 (right)
 Acrylic on canvas
 Collection of the artist



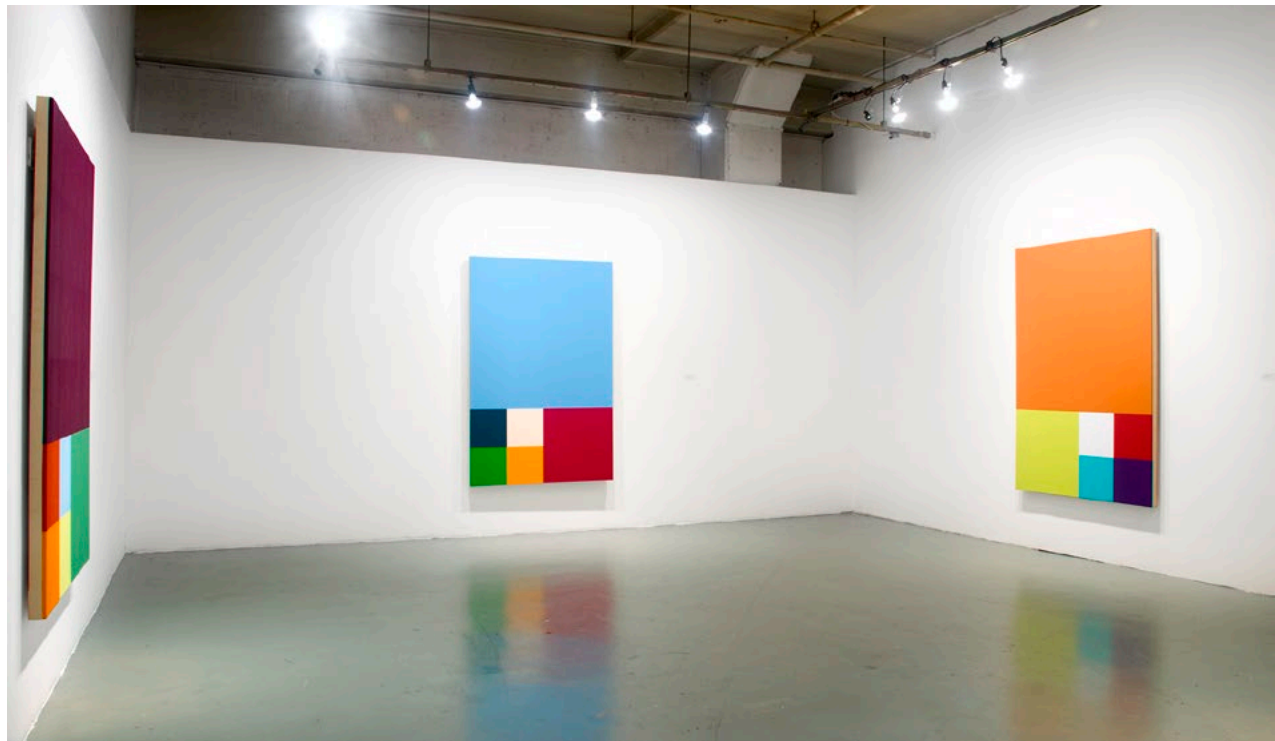
Untitled 6x4-07, 6 x 4 feet, 1986
 Acrylic on canvas
 Collection of the artist



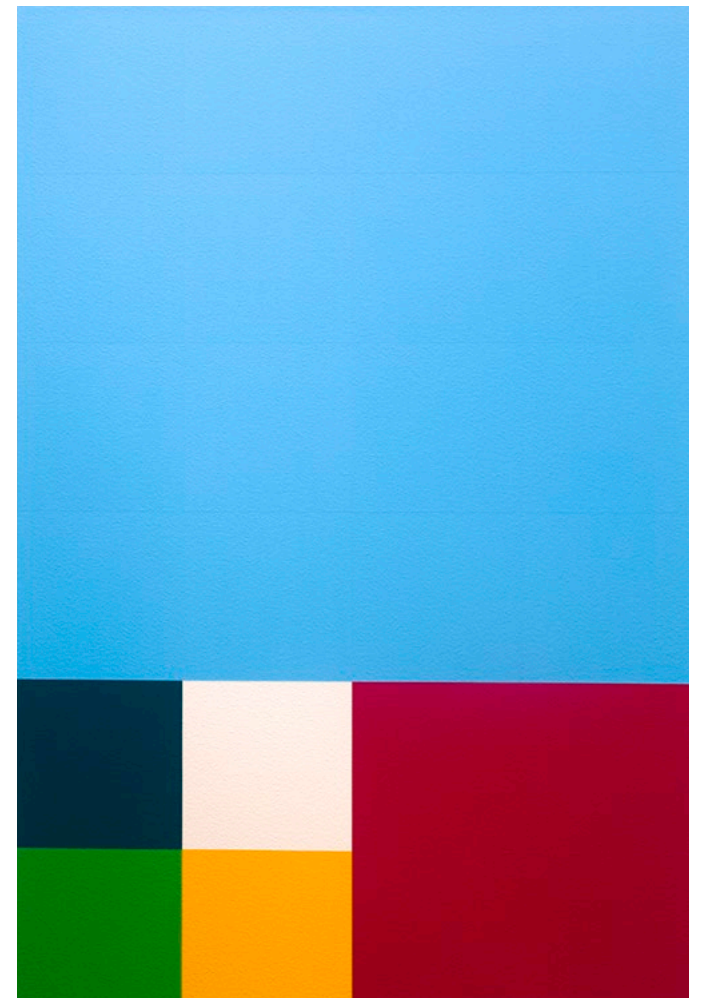
Untitled, 8x8-5A RO#3, 8 x 8 feet, acrylic on canvas, 1999-2001 (left)
Untitled, 8x8-117 5A 4A 117B/117B, X-4A, 8 x 8 feet, acrylic on cavas, 2005-2006 (right)
Study for Untitled 6x7-09, 43 x 47 inches, acrylic on masonite, 1989-93 (center)
 Collection of the artist



Untitled, 8x8 Double Square 9N, 8 x 8 feet, 2005 (center)
8x8-5A 4A 117B/117B X-4A©, 8 x 8 feet, 1999-2001 (left)
Untitled, 27C, 8 x 8 feet, 2005-2006 (right)
 Acrylic on canvas
 Collection of the artist



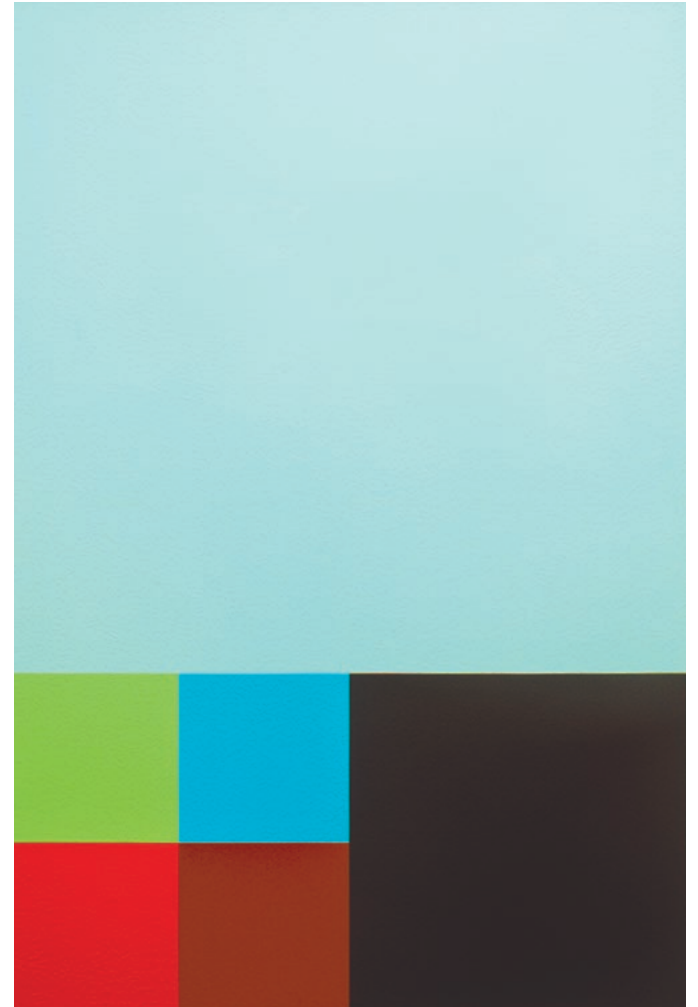
Untitled, 6x4-19, 6 x 4 feet, 1988 (center)
Untitled, 6x4-07, 6 x 4 feet, 1987 (left)
Untitled, 6x4-05, 6 x 4 feet, 1986 (right)
 Acrylic on canvas
 Collection of the artist



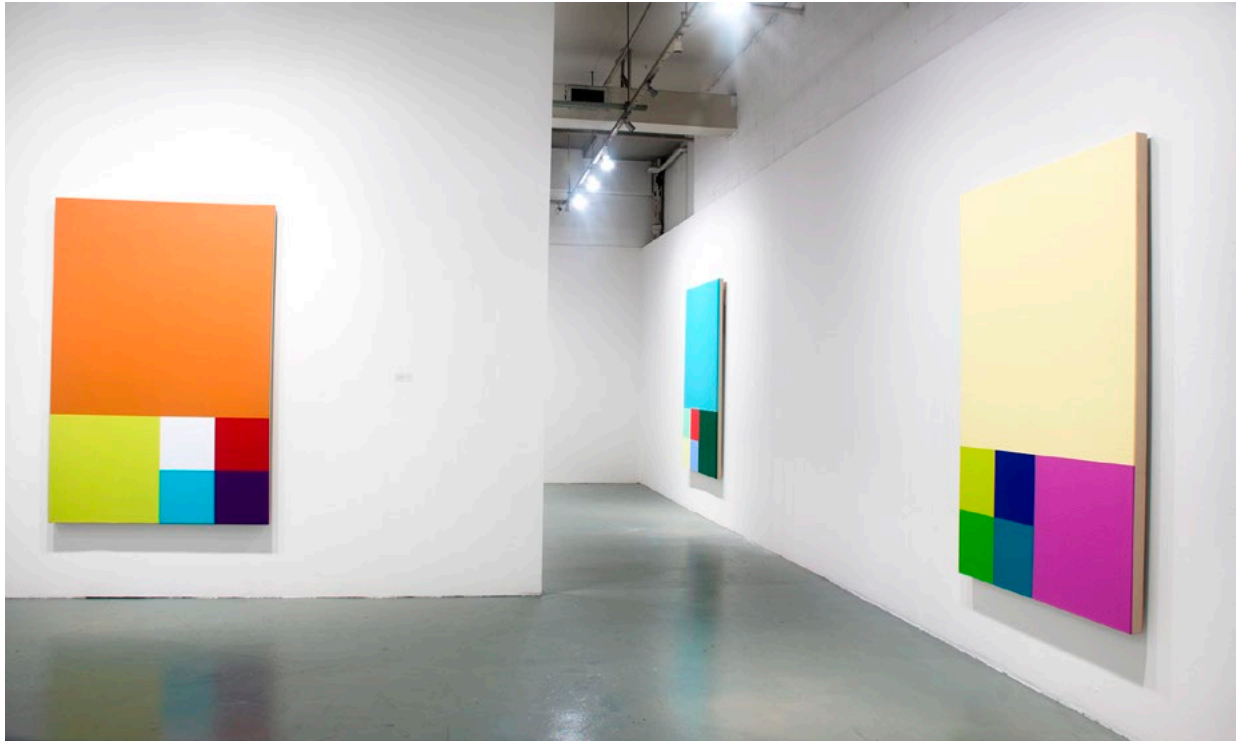
Untitled, 6x4-19, 6 x 4 feet, 1988
 Acrylic on canvas
 Collection of the artist



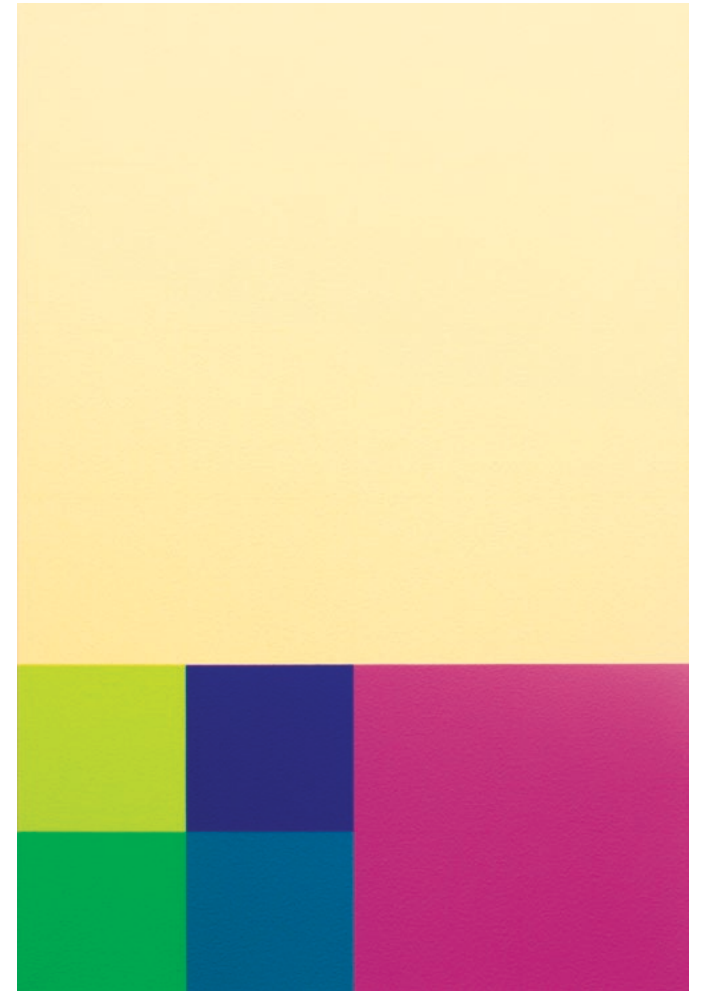
Untitled, 6x4-06, 6 x 4 feet, 1986 (left)
Untitled, 6x4-08, 6 x 4 feet, 1986 (far left)
Untitled, 6x4-16, 6 x 4 feet, 1986 (right)
 Acrylic on canvas
 Collection of the artist



Untitled, 6x4-16, 6 x 4 feet, 1986
 Acrylic on canvas
 Collection of the artist



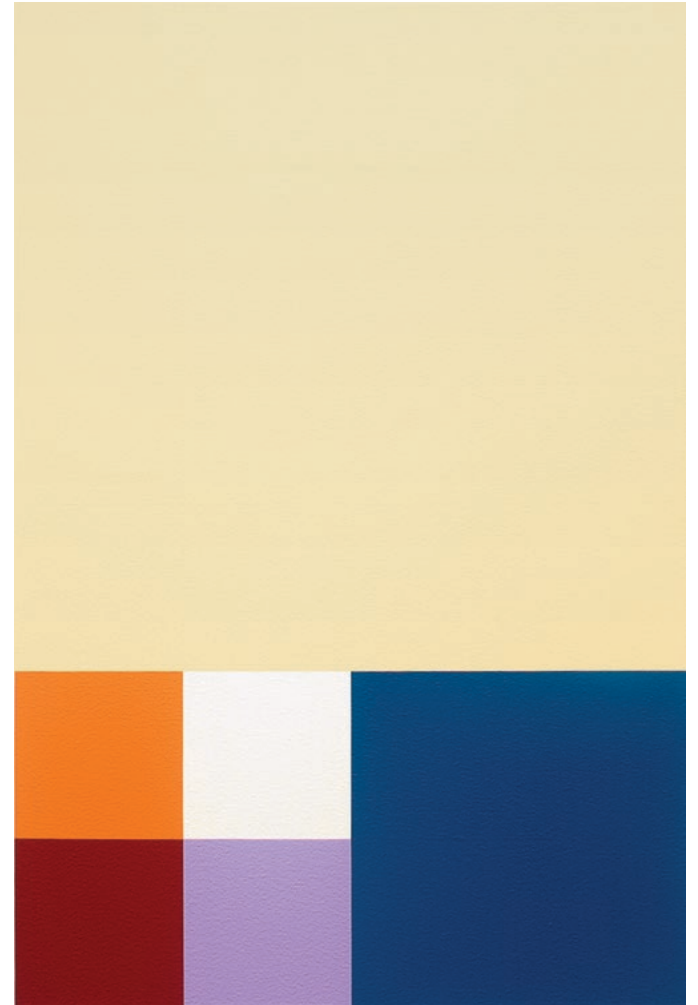
Untitled, 6x4-05, 6 x 4 feet, 1986 (left)
Untitled, 6x4-08, 6 x 4 feet, 1986 (right)
Untitled, 6x4-06, 6 x 4 feet, 1986 (far right)
 Acrylic on canvas
 Collection of the artist



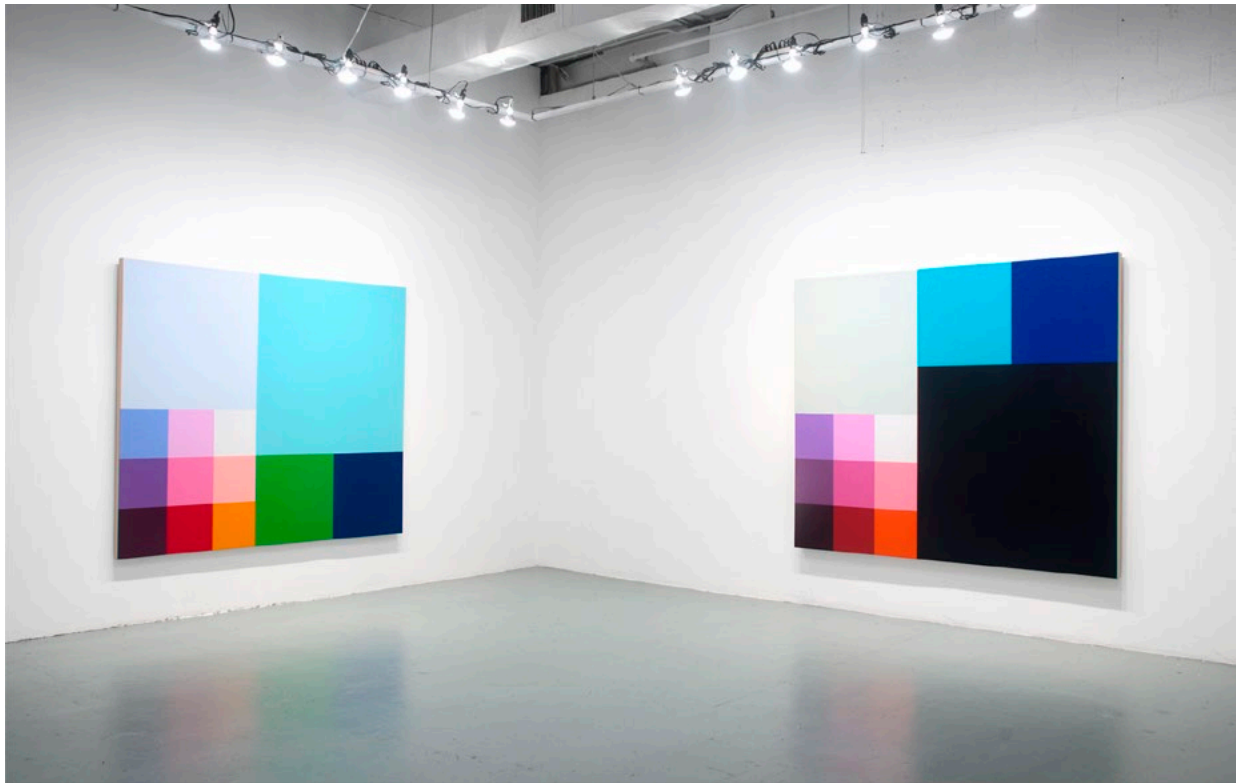
Untitled, 6x4-08, 6 x 4 feet, 1986
 Acrylic on canvas
 Collection of the artist



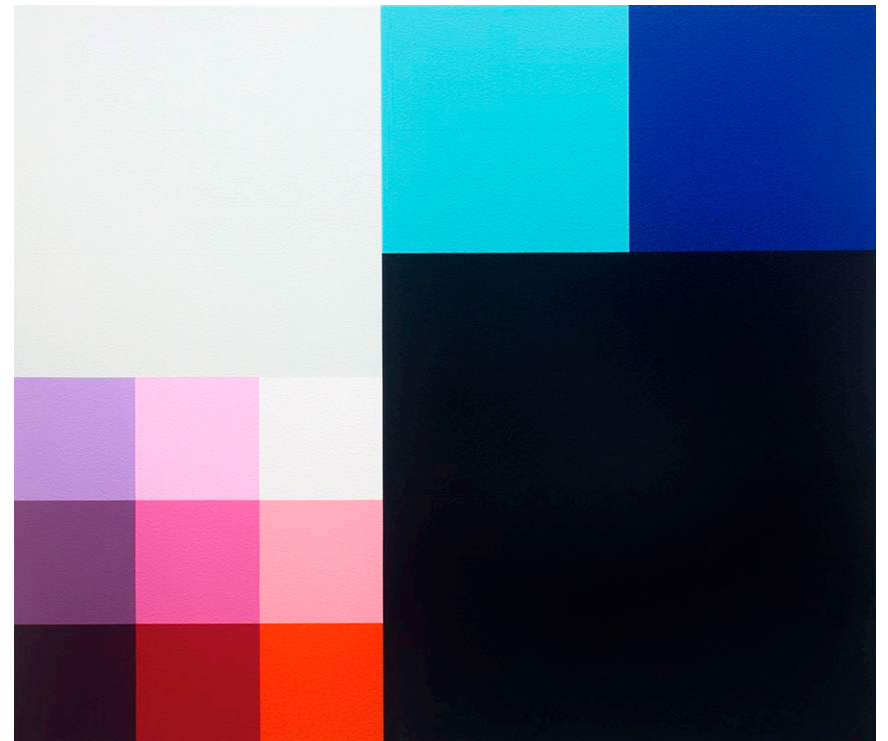
Untitled, 6x4-04, 6 x 4 feet, 1986 (left)
Untitled, 6x4-09, 6 x 4 feet, 1986 (right)
 Acrylic on canvas
 Collection of the artist



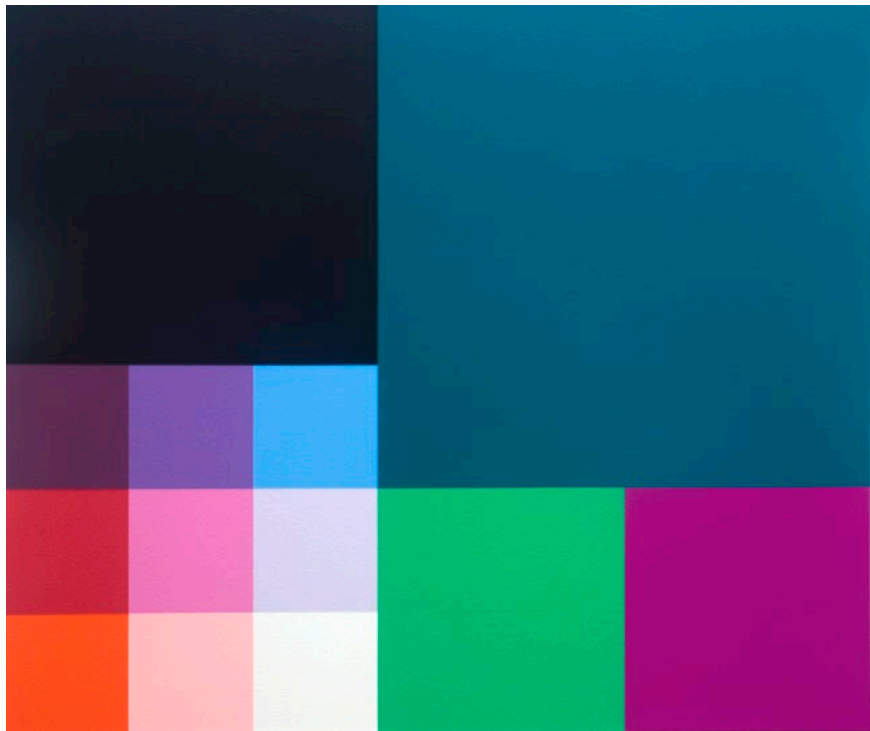
Untitled, 6x4-04, 6 x 4 feet, 1986
 Acrylic on canvas
 Collection of the artist



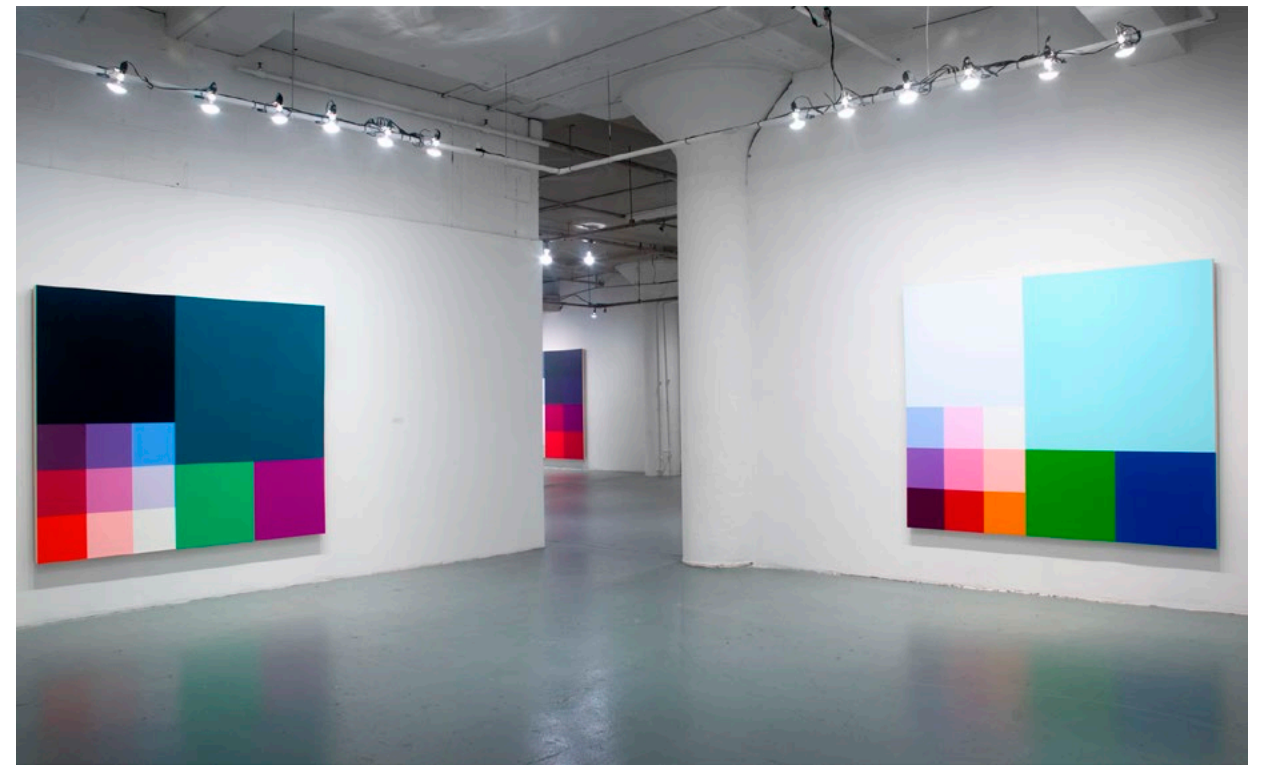
Untitled, 6x7-01, 6 x 7 feet, 1988-1989 (left)
Untitled, 6x7-12, 6 x 7 feet, 1991 (right)
 Acrylic on canvas
 Collection of the artist



Untitled, 6x7-10, 6 x 7 feet, 1991
 Acrylic on canvas
 Collection of the artist



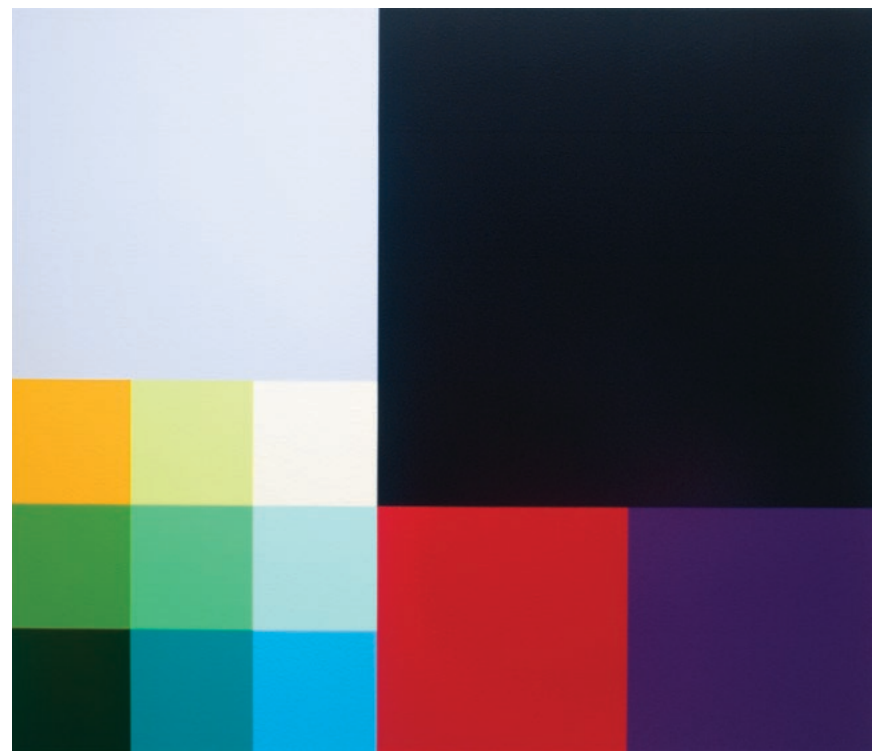
Untitled, 6x7-12, 6 x 7 feet, 1991
 Acrylic on canvas
 Collection of the artist



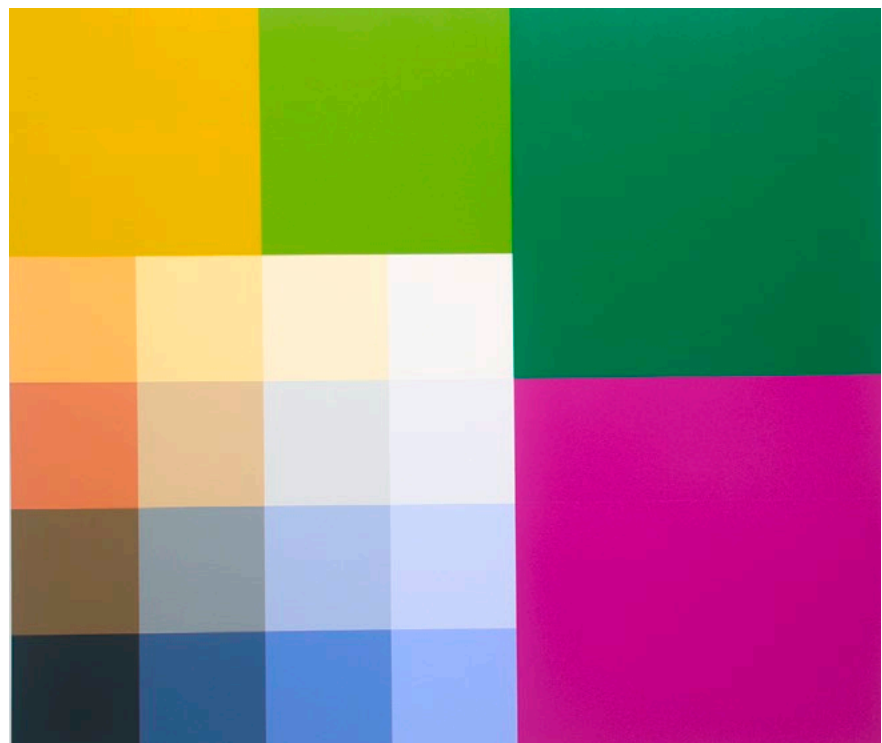
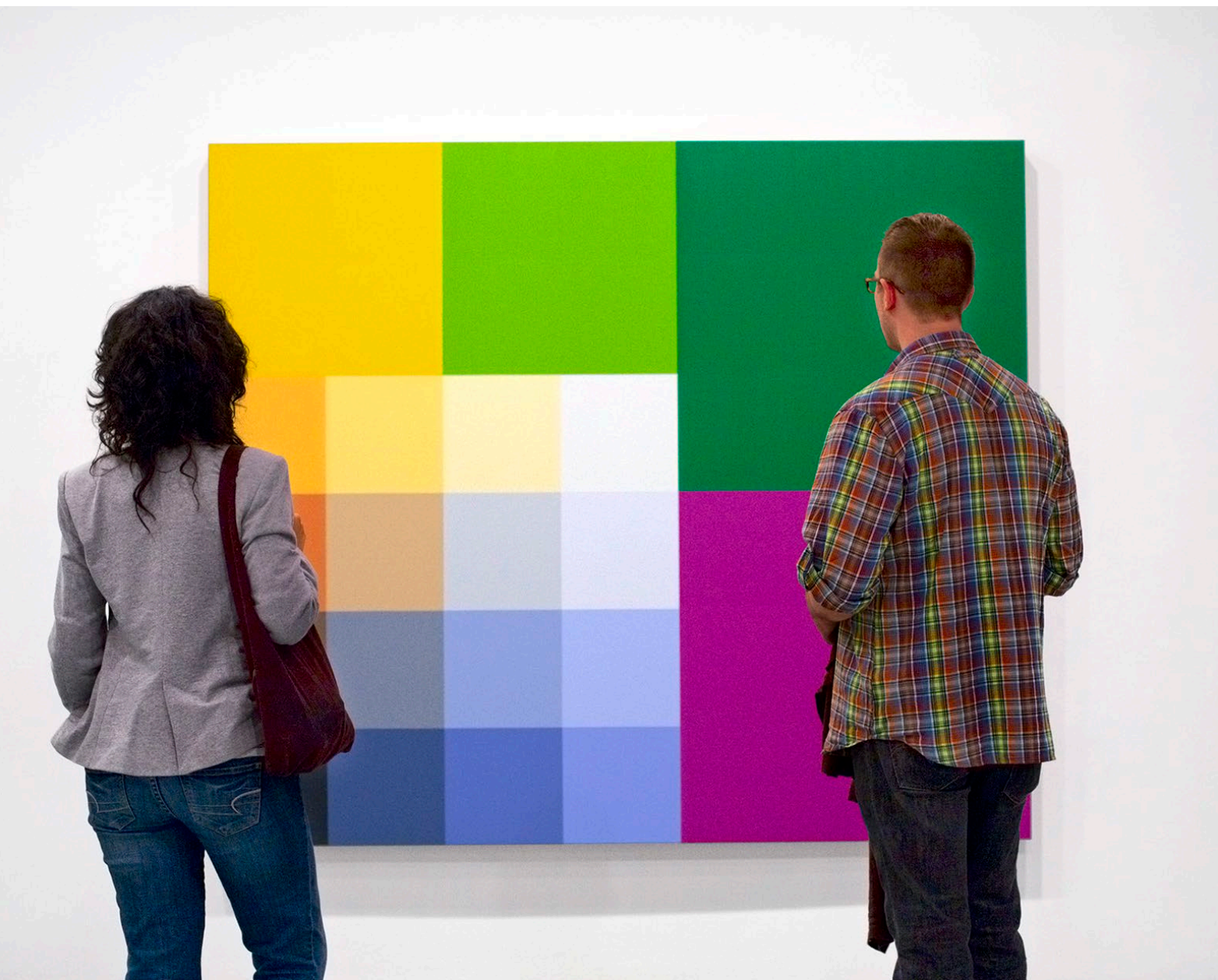
Untitled, 6x7-10, 6 x 7 feet, 1991 (left)
Untitled, 6x7-01, 6 x 7 feet, 1988-1989 (right)
 Acrylic on canvas
 Collection of the artist



Untitled, 6x7-05, 6 x 7 feet, 1991 (left)
Untitled, 6x7-10, 6 x 7 feet, 1991 (right)
 Acrylic on canvas
 Collection of the artist



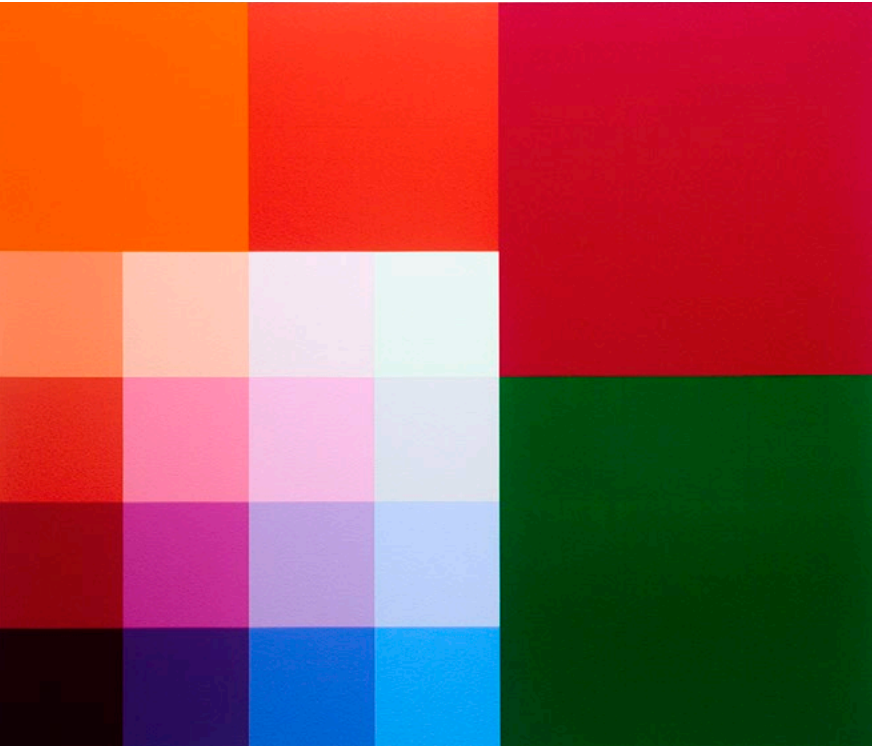
Untitled, 6x7-05, 6 x 7 feet, 1991
 Acrylic on canvas
 Collection of the artist



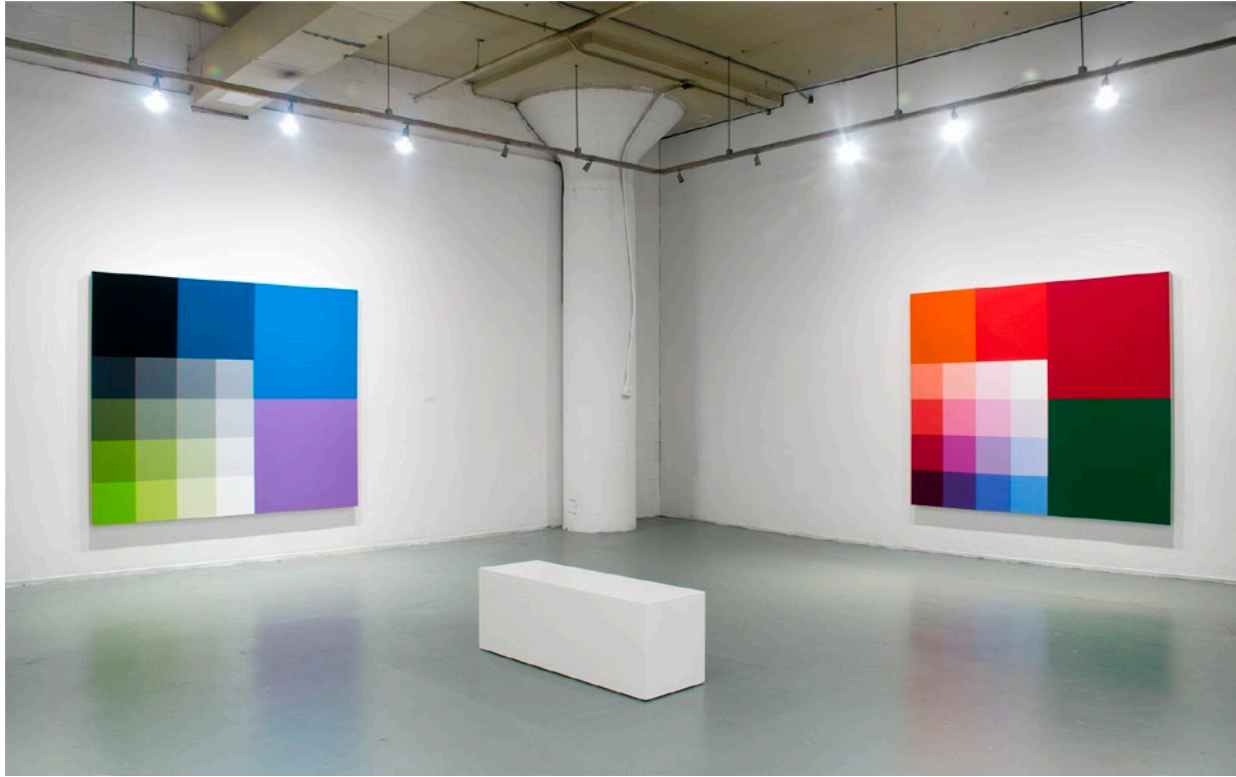
Untitled, 6x7-5A 15 B3-Five, 6 x 7 feet, 1999-2001
 Acrylic on canvas
 Collection of the artist



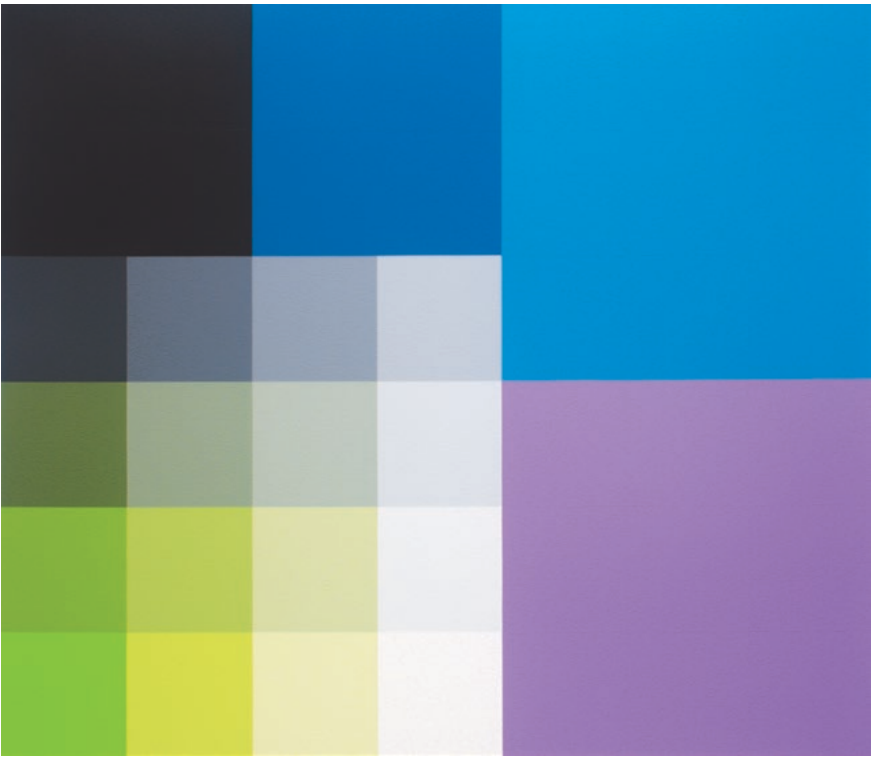
Untitled, 6x7-5A RO#3, 6 x 7 feet, 1992-1999 (left)
Untitled, 6x7-3A, 6 x 7 feet, 1992-1998 (right)
 Acrylic on canvas
 Collection of the artist



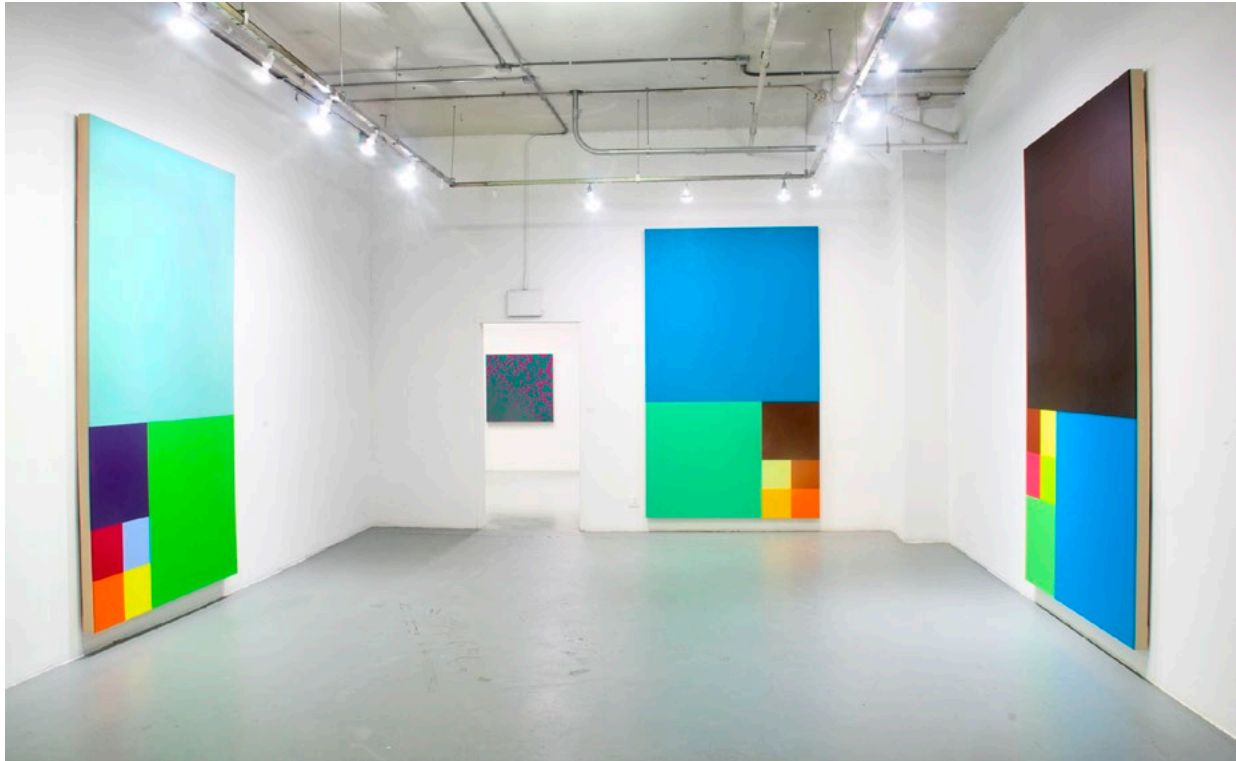
Untitled, 6x7-5A RO#3, 6 x 7 feet, 1992-1999
 Acrylic on canvas
 Collection of the artist



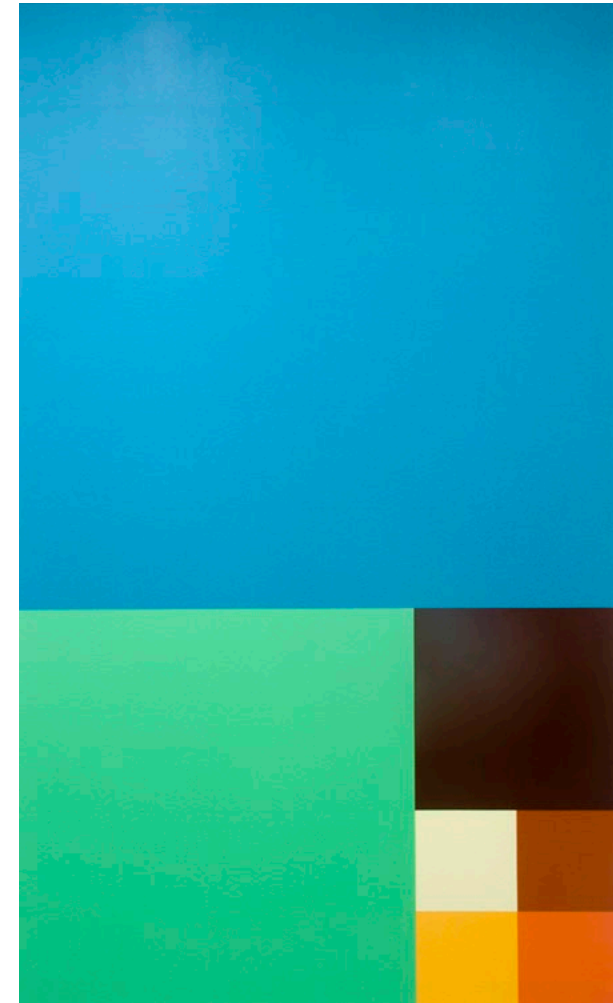
Untitled, 6x7-LN/29AA, 6 x 7 feet, 1999-2001 (left)
Untitled, 6x7-5A RO#3, 6 x 7 feet, 1992-1999 (right)
 Acrylic on canvas
 Collection of the artist



Untitled, 6x7-LN/29AAA, 6 x 7 feet, 1992-1999
 Acrylic on canvas
 Collection of the artist



Untitled, 10x6-01, 10 x 6 feet, 1987 (center)
Untitled, 10x6-03, 10 x 6 feet, 1987 (right)
Untitled, 10x6-04, 10 x 6 feet, 1987 (left)
 Acrylic on canvas
 Collection of the artist



Untitled, 10x6-01, 10 x 6 feet, 1987
 Acrylic on canvas
 Collection of the artist



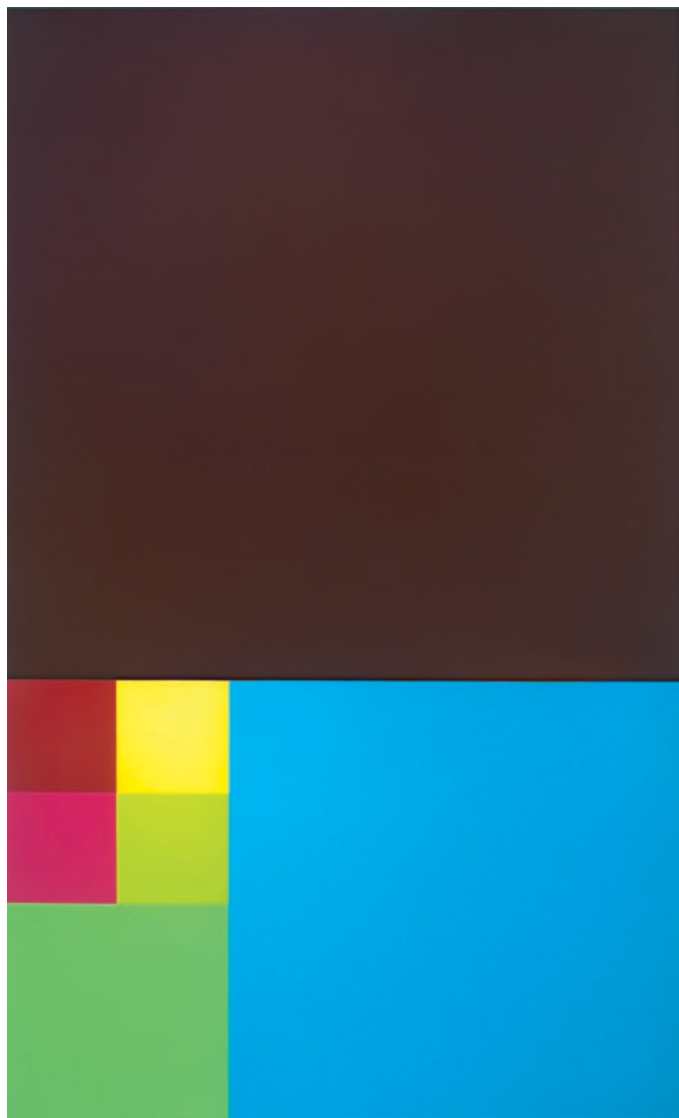
Untitled, 10x6-12, 10 x 6 feet, 1990 (center)

Untitled, 10x6-03, 10 x 6 feet, 1987 (right)

Untitled, 10x6-04, 10 x 6 feet, 1987 (left)

Acrylic on canvas

Collection of the artist



Untitled, 10x6-04, 10 x 6 feet, 1987
Acrylic on canvas
Collection of the artist



Untitled, 10x6-03, 10 x 6 feet, 1987
Acrylic on canvas
Collection of the artist



Untitled, 7-25-6x11-25-7x25-25-6, 7 x 14 feet, 2010
 Acrylic on canvas
 Collection of the artist

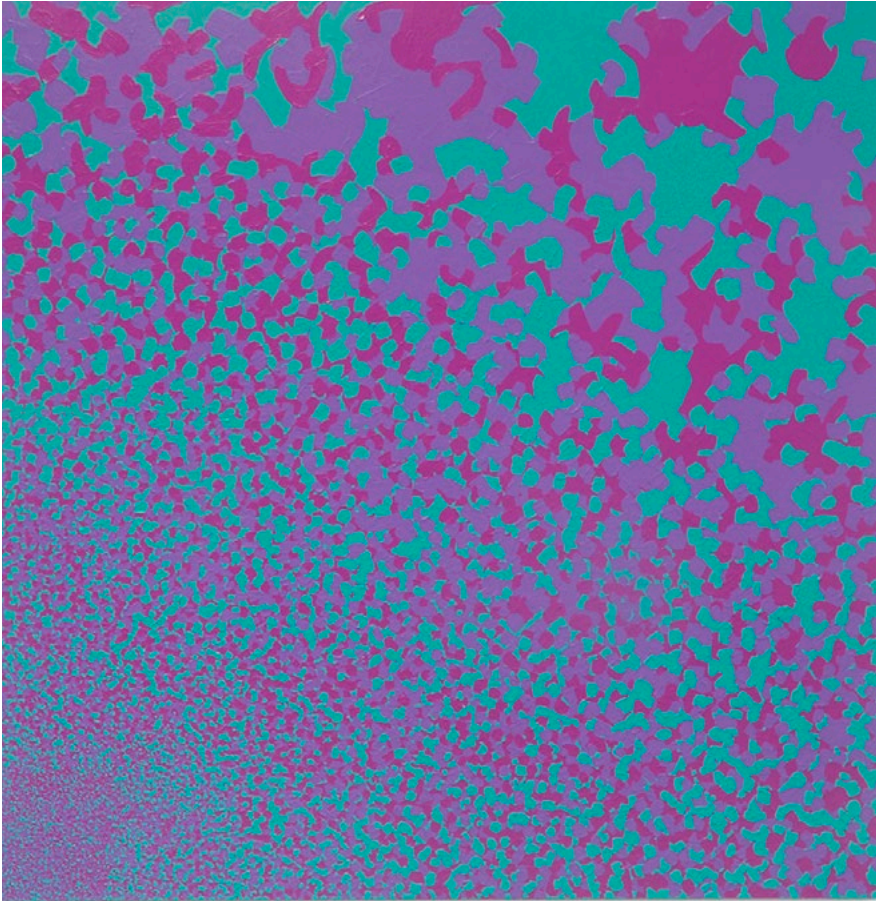


Untitled, 11-25-7x21-25-6x25-25-6, 7 x 14 feet, 2010
 Acrylic on canvas
 Collection of the artist





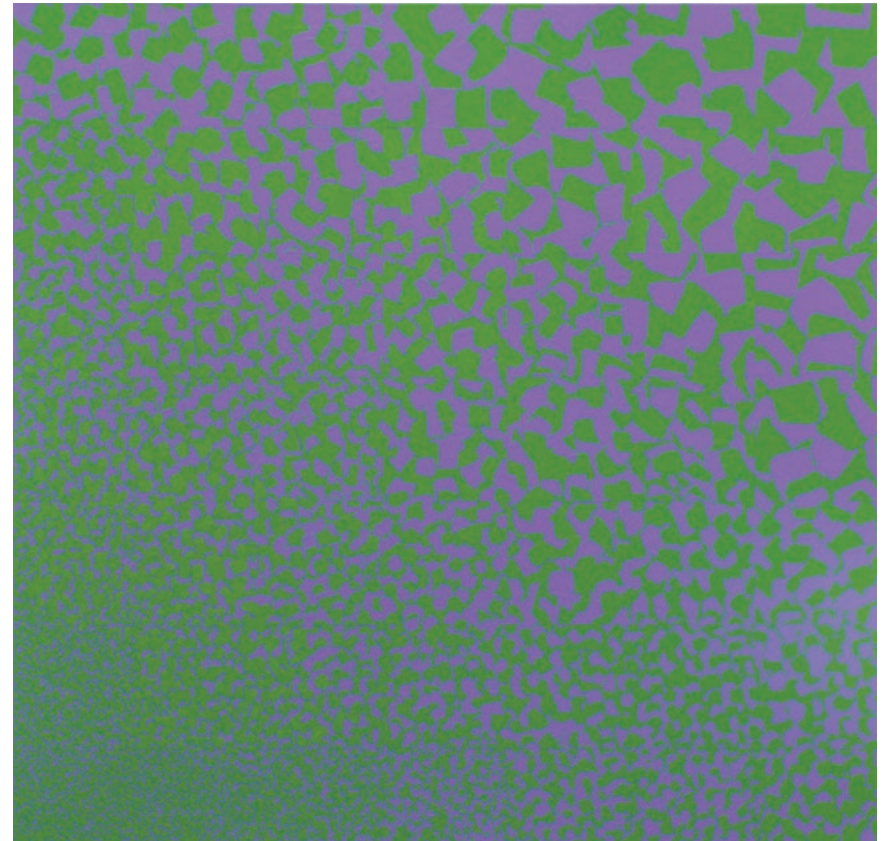
Untitled, 13-25-7x27-25-6, 7 x 7 feet, 2009 (left)
Untitled, 11-25-7x13-25-7x23-25-6, 7 x 7 feet, 2010 (right)
 Acrylic on canvas
 Collection of the artist



Untitled, 11-25-7x13-25-7x23-25-6, 7 x 7 feet, 2010
 Acrylic on canvas
 Collection of the artist



Untitled, 11-25-7x23-25-6x27-25-6, 7 x 7 feet, 2010 (left)
Untitled, 13-25-7x27-25-6, 7 x 7 feet, 2009 (right)
 Acrylic on canvas
 Collection of the artist



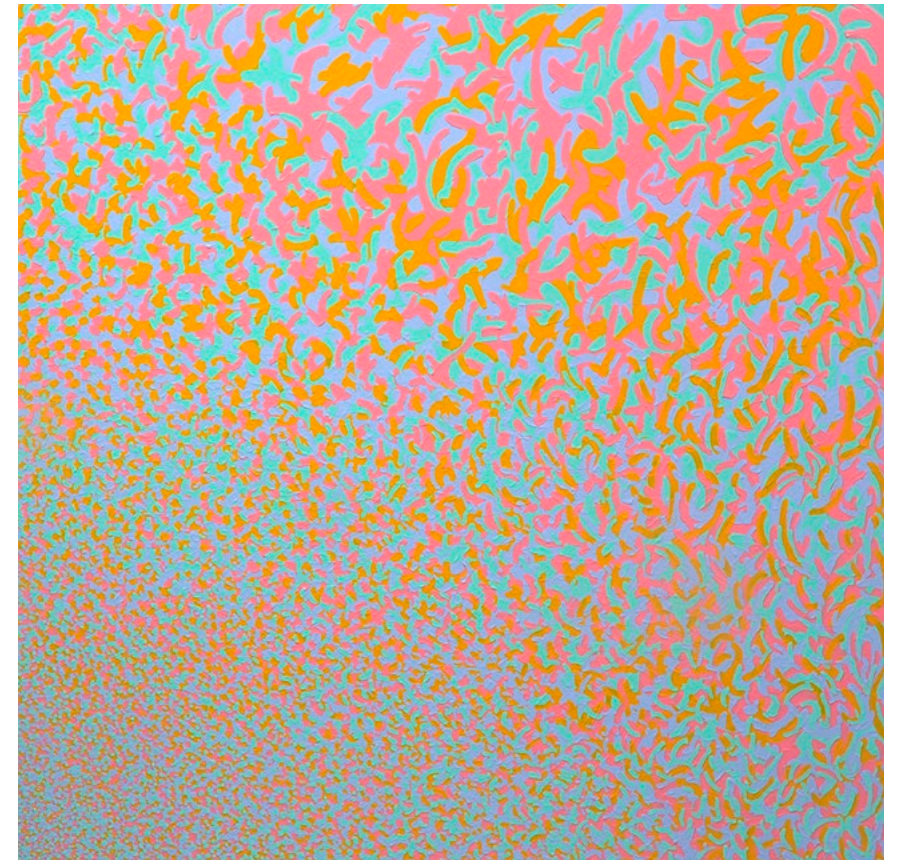
Untitled, 13-25-7x27-25-6, 7 x 7 feet, 2009
 Acrylic on canvas
 Collection of the artist



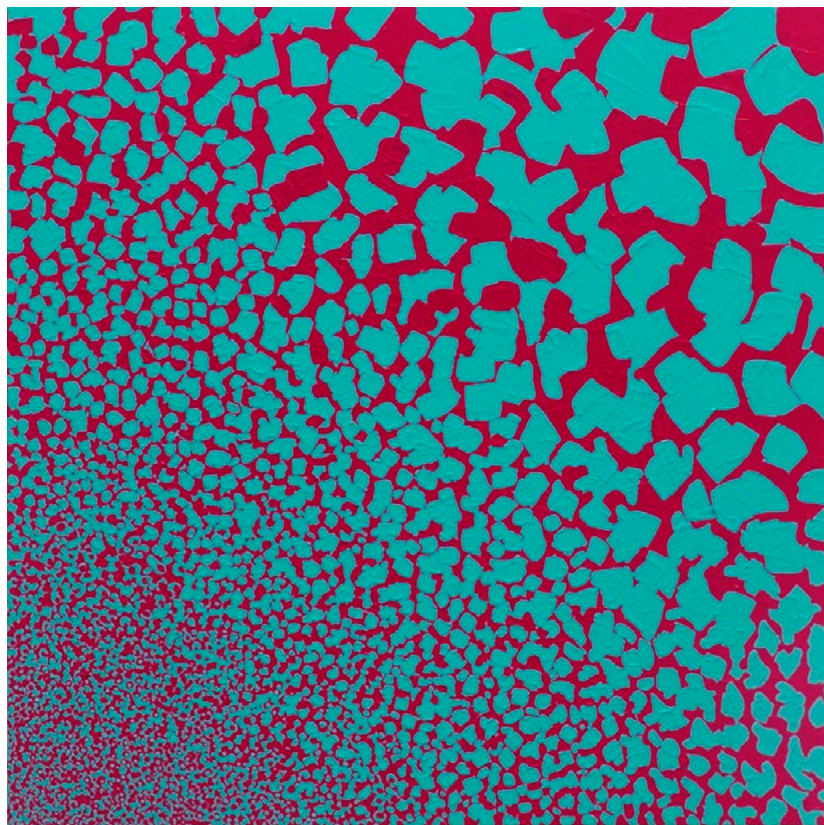




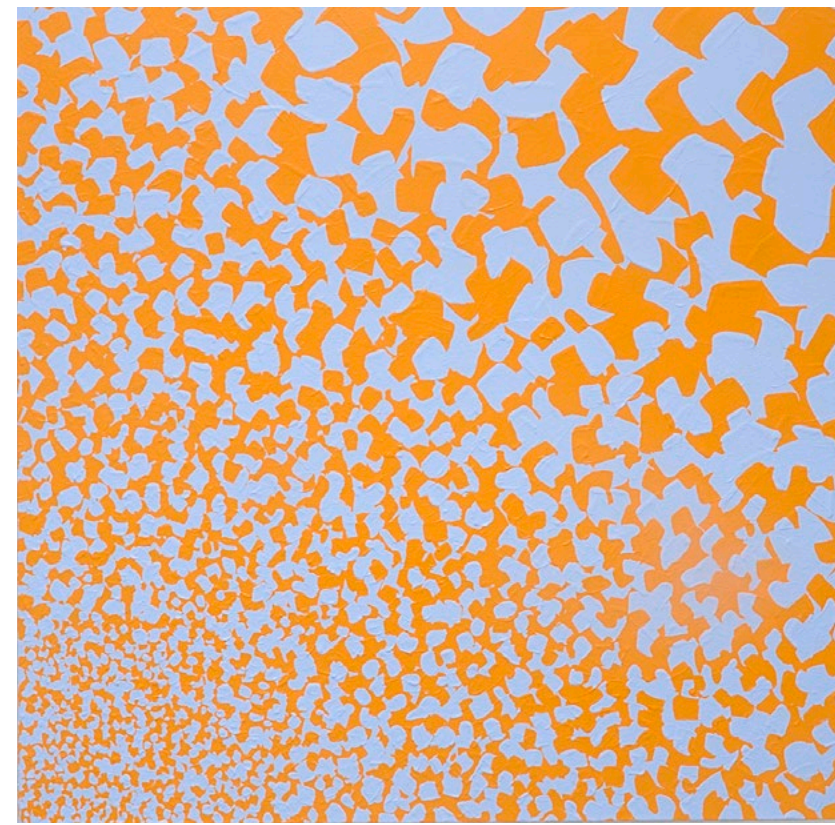
Untitled, 7x7-13-19-6x9-19-7x19-19-5x25-19-5, 7 x 7 feet, 2010 (left)
Untitled, 7x7-1-13-7x16-13-4x7-13-5x25-13-6, 7 x 7 feet, 2010 (right)
 Acrylic on canvas
 Collection of the artist



Untitled, 7x7-1-13-7x16-13-4x7-13-5x25-13-6, 7 x 7 feet, 2010
 Acrylic on canvas
 Collection of the artist



Untitled, 9-25-8x23-25-6, 4 x 4 feet, 2009
 Acrylic on canvas
 Collection of the artist

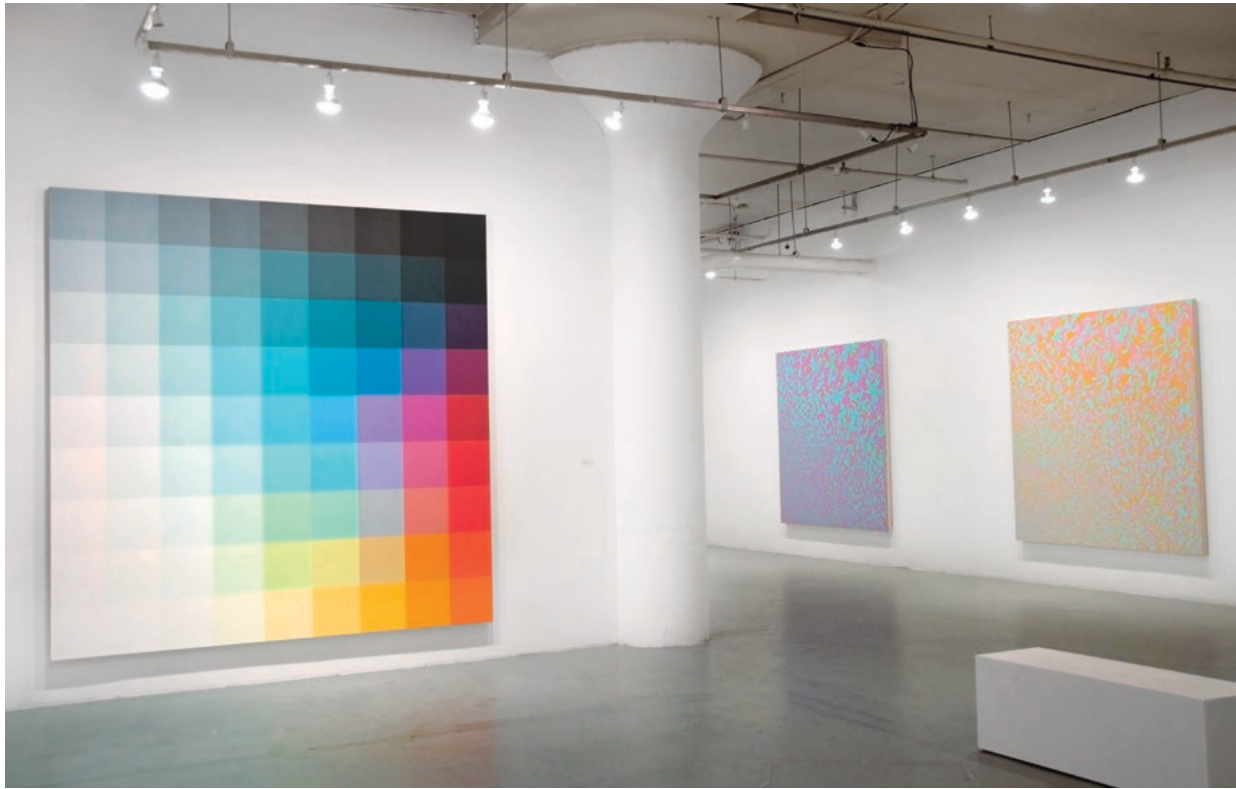


Untitled, 3-15-8x17-15-5, 4 x 4 feet, 2009
 Acrylic on canvas
 Collection of the artist

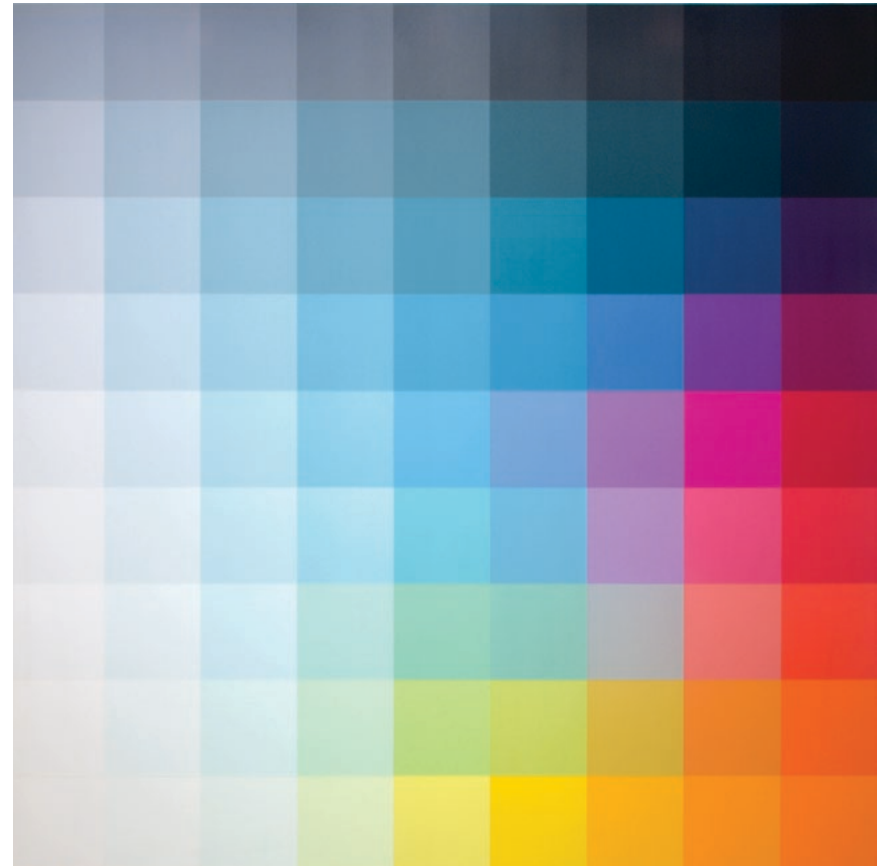


Untitled, Red & Green Circle, 8 feet 6 inches diameter, 1969 (center)
Untitled, 1-13-7x16-13-4x7-13-5x25-13-5, 7 x 7 feet, 2010 (left)
Untitled, 10x12-02, 10 x 12 feet, 1994-1995 (right)
 Acrylic and oil on canvas
 Collection of the artist

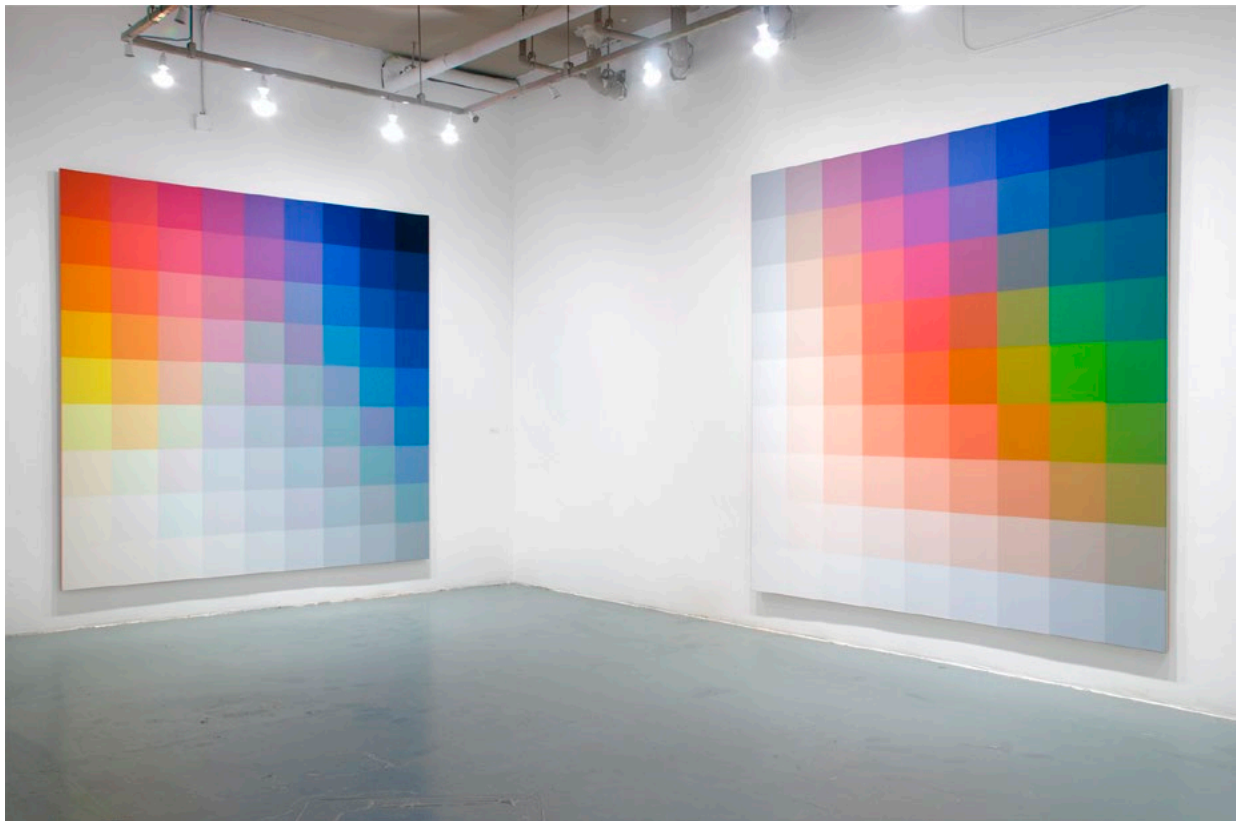




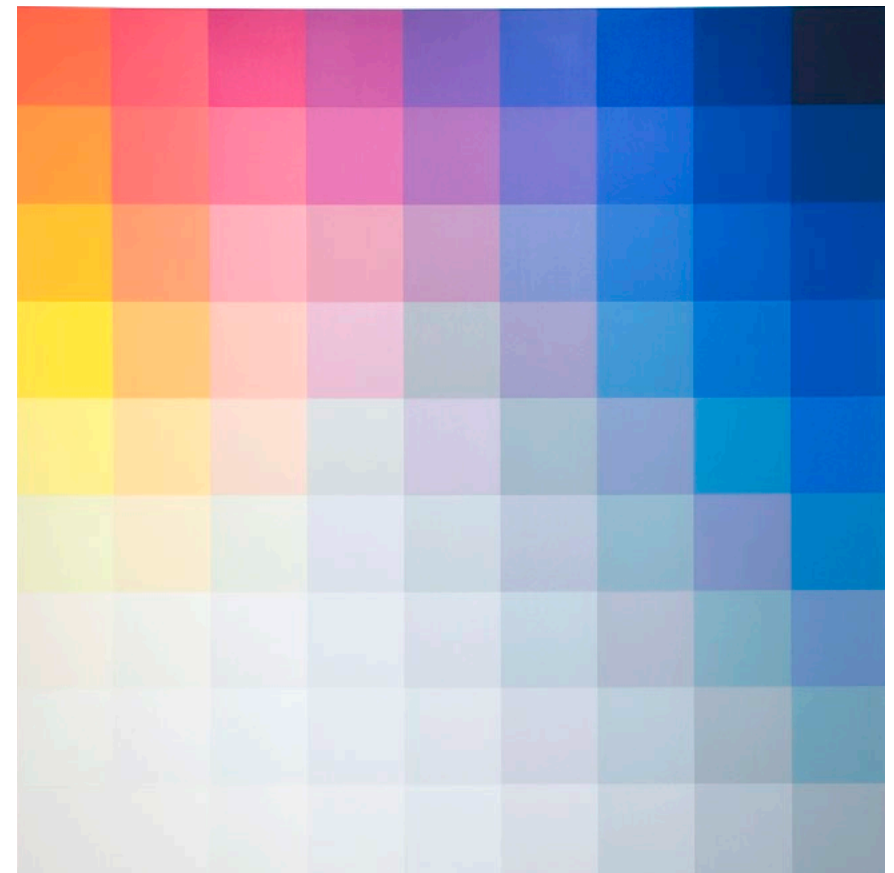
Untitled 914, 9 x 9 feet, 1979 (left)
Untitled, 7x7-13-19-6x9-19-7x19-19-5x25-19-5, 7 x 7 feet, 2010 (middle)
Untitled, 7x7-1-13-7x16-13-4x7-13-5x25-13-6, 7 x 7 feet, 2010 (right)
 Acrylic on canvas
 Collection of the artist



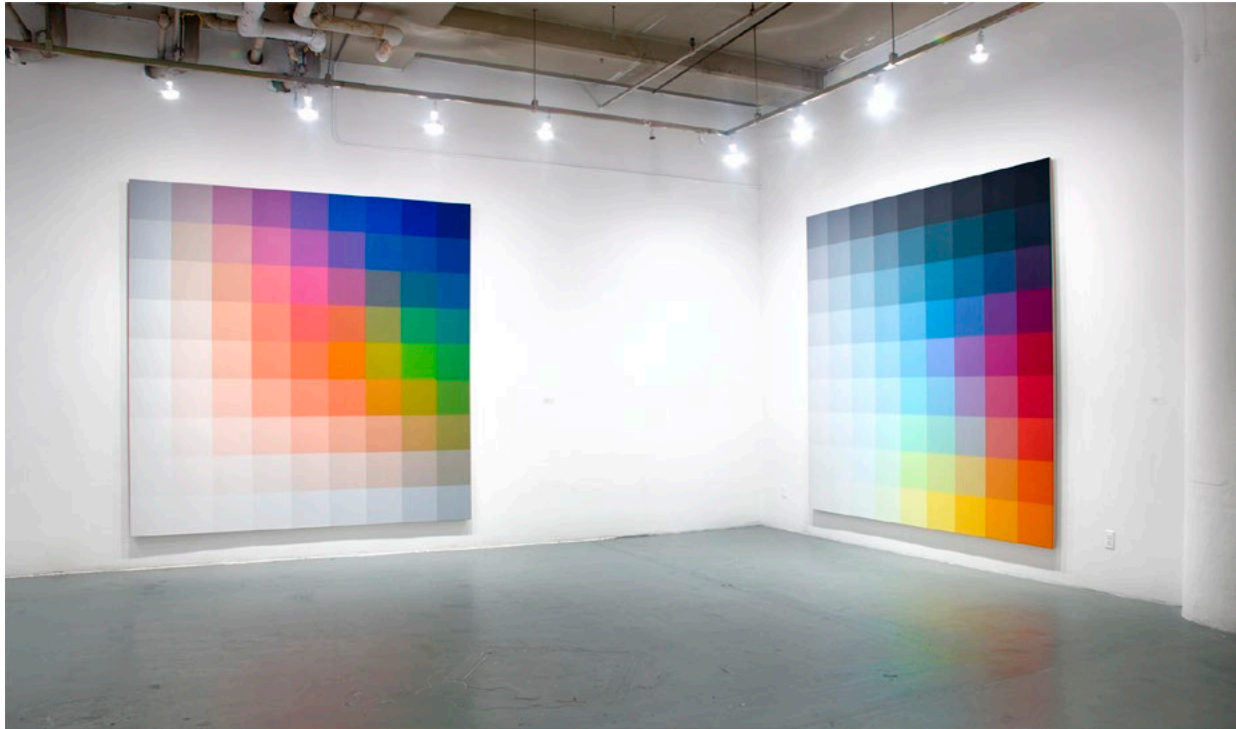
Untitled, 914, 9 x 9 feet, 1979
 Acrylic on canvas
 Collection of the artist



Untitled, 920, 9 x 9 feet, 1979 (left)
Untitled, 915, 9 x 9 feet, 1979 (right)
 Acrylic on canvas
 Collection of the artist



Untitled, 920, 9 x 9 feet, 1979
 Acrylic on canvas
 Collection of the artist

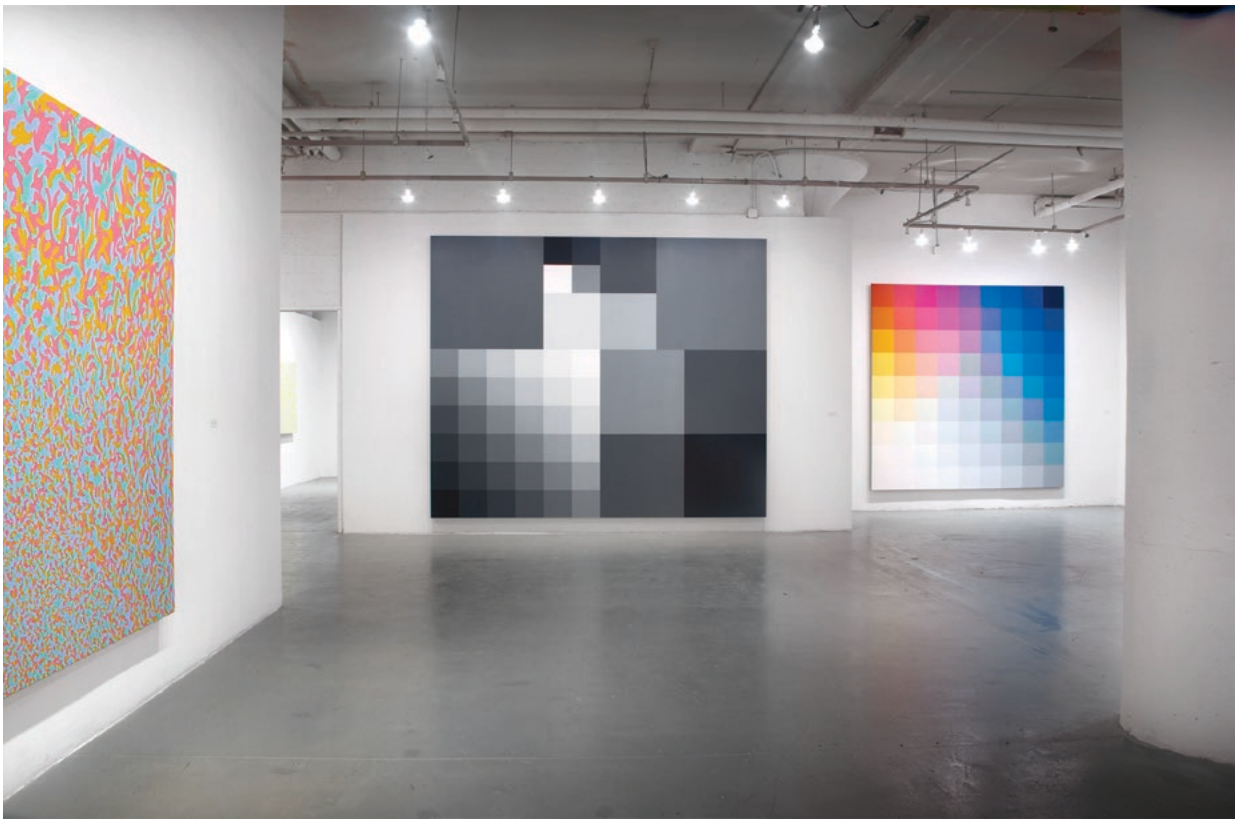


Untitled, 915, 9 x 9 feet, 1979 (left)
Untitled, 914, 9 x 9 feet, 1979 (right)
 Acrylic on canvas
 Collection of the artist





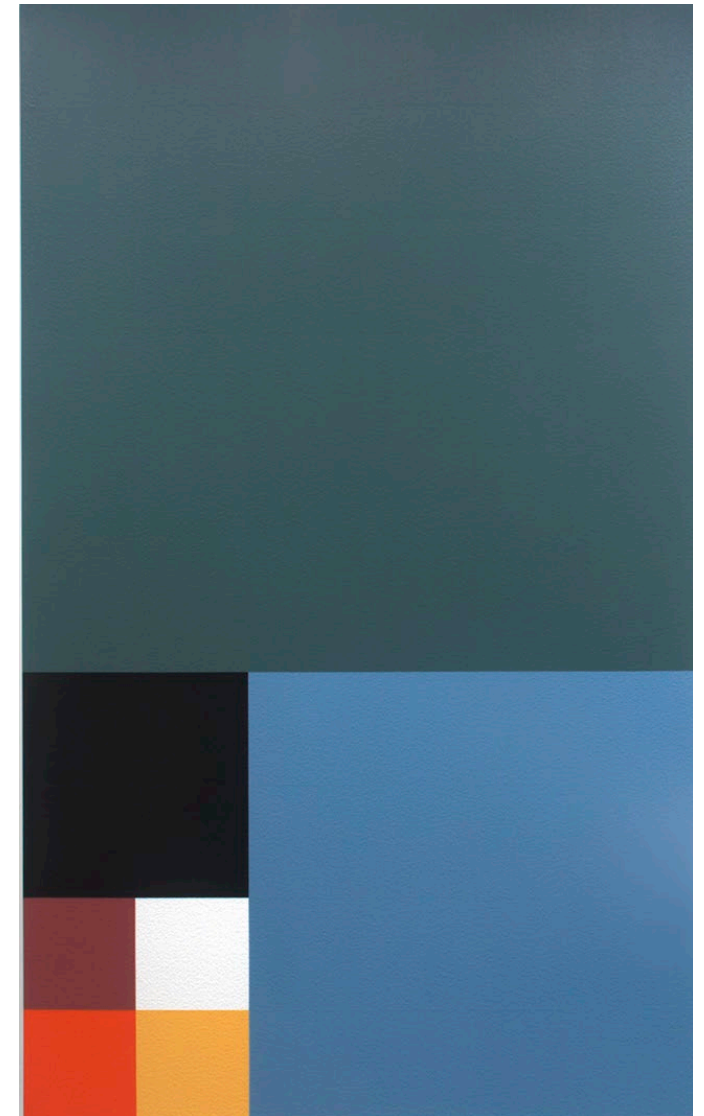
Untitled, 10x16-01, 10 x 16 feet, 1986 (center)
Untitled, 10x6-10, 10 x 6 feet, 1990 (left)
Untitled, 10x6-11, 10 x 6 feet, 1990 (right)
 Acrylic on canvas
 Collection of the artist



Untitled, 10x12-02, 10 x 12 feet, 1994-1995 (center)
Untitled, 1-13-7x16-13-4x7-13-5x25-13-5, 7 x 7 feet, 2010 (left)
Untitled, 920, 9 x 9 feet, 1980 (right)
 Acrylic on canvas
 Collection of the artist



Untitled, 10x16-01, 10 x 16 feet, 1986 (left)
Untitled, 10x6-11, 10 x 6 feet, 1990 (right)
 Acrylic on canvas
 Collection of the artist



Untitled, 10x6-11, 10 x 6 feet, 1990
 Acrylic on canvas
 Collection of the artist



CHECKLIST OF EXHIBITION



1. *Red and Green Circle*, 1969,
Oil and Acrylic on canvas,
102 inches Diameter



2. *Untitled 10x30*, 1973, 10 x 30 feet



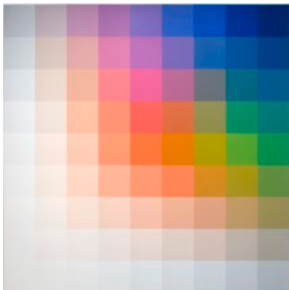
3. *Untitled 703*, 1978,
84 x 84 inches



4. *Untitled 712*, 1978,
84 x 84 inches



5. *Untitled 914*, 1979,
108 x 108 inches



6. *Untitled 915*, 1979,
108 x 108 inches



7. *Untitled 920*, 1979,
108 x 108 inches



8. *Untitled 6x4-04*, 1986,
72 x 48 inches



9. *Untitled 6x4-05*, 1986,
72 x 48 inches



10. *Untitled 6x4-06*, 1986,
72 x 48 inches



11. *Untitled 6x4-07*, 1986,
72 x 48 inches



12. *Untitled 6x4-08*, 1986,
72 x 48 inches



13. *Untitled 6x4-09*, 1986,
72 x 48 inches



14. *Untitled 6x4-16*, 1986,
72 x 48 inches



15. *Untitled 10x16-01*, 1986,
10 x 12 feet



16. *Untitled 10x6-01*, 1987,
120 x 72 inches



17. *Untitled 10x6-03*, 1987,
120 x 72 inches



18. *Untitled 10x6-04*, 1987,
120 x 72 inches



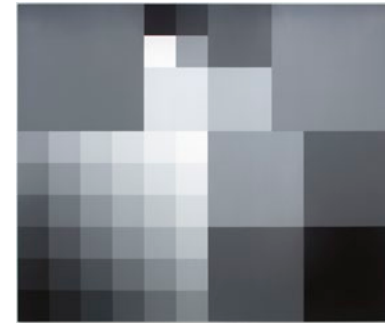
19. *Untitled 6x4-19*, 1988,
72 x 48 inches



20. *Untitled 6x7-01*, 1988–1989,
72 x 48 inches



21. *Untitled 6x7-10*, 1989–1993,
72 x 84 inches



30. *Untitled 10x12-02*, 1994–1995,
10 x 12 feet



22. *Untitled 10x6-10*, 1990,
120 x 72 inches



23. *Untitled 10x6-11*, 1990,
120 x 72 inches



24. *Untitled 10x6-12*, 1990,
120 x 72 inches



31. *Untitled 6x7-5A 15 B3-Five*,
1999–2001, 72 x 84 inches



25. *Untitled 6x7-13*, 1991,
72 x 84 inches



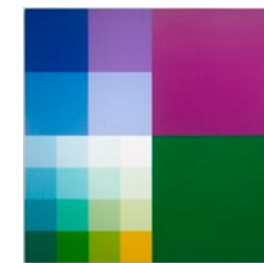
26. *Untitled 6x7-15*, 1991,
72 x 84 inches



27. *Untitled 6x7-3A*, 1992–1998,
72 x 84 inches



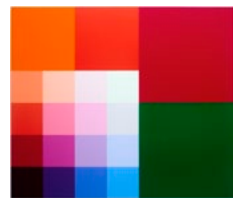
32. *Untitled, 8x8 27C*, 2005–2006,
96 x 96 inches



33. *Untitled 117 5A 4A 117B/117B,
X-4A*, 2005–2006, 96 x 96 inches



28. *Untitled, 6x7-LN/29AA*, 1992–1999,
72 x 84 inches



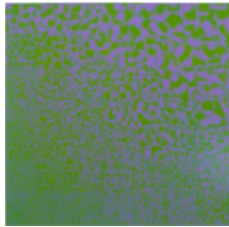
29. *Untitled, 6x7-5A RO#3*, 1992–1999,
72 x 84 inches



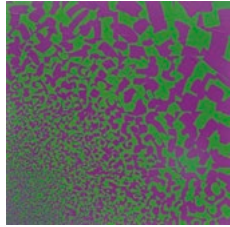
34. *Untitled, 8x8-5A RO #3*,
1999–2001, 96 x 96 inches



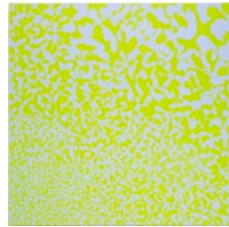
35. *Untitled, 8x8 3C Double Square 9N*,
2005, 96 x 96 inches



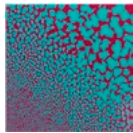
36. *Untitled*, 13/25/7 x 27/25/6, 2007, 84 x 84 inches



37. *Untitled*, 11/27/7 x 25/27/6, 2007, 48 x 48 inches



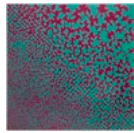
38. *Untitled*, 15/13/4 x 19/13/8, 2008, 48 x 48 inches



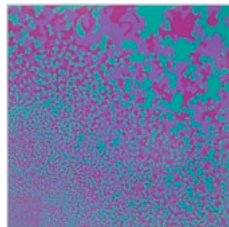
39. *Untitled*, 9/25/8 x 23/25/6, 2009, 48 x 48 inches



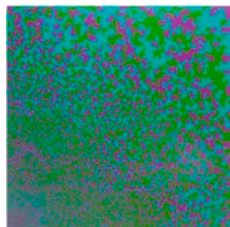
40. *Untitled*, 3/15/8 x 17/15/5, 2009, 48 x 48 inches



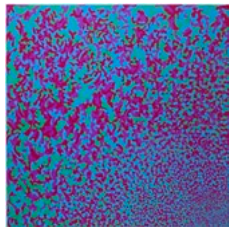
41. *Untitled*, 9/25/6 x 23/25/6, 2009, 84 x 84 inches



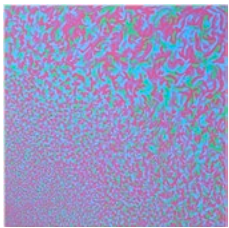
42. *Untitled* 11/25/7 x 13/25/7 x 23-25-6, 2010, 84 x 84 inches



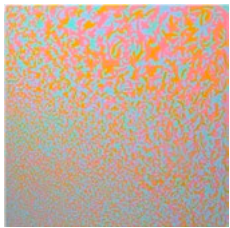
43. *Untitled* 11/25/7 x 23/25/6 x 27/25/6, 2010, 84 x 84 inches



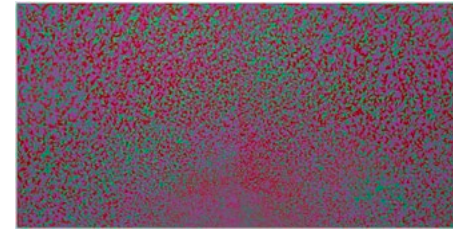
44. *Untitled*, 9/25/8 x 13/25/7 x 19/25/6 x 25/25/6, 2010, 84 x 84 inches



45. *Untitled* 13/19/7 x 9/19/7 x 19/19/5 x 25/19/5, 2010, 84 x 84 inches



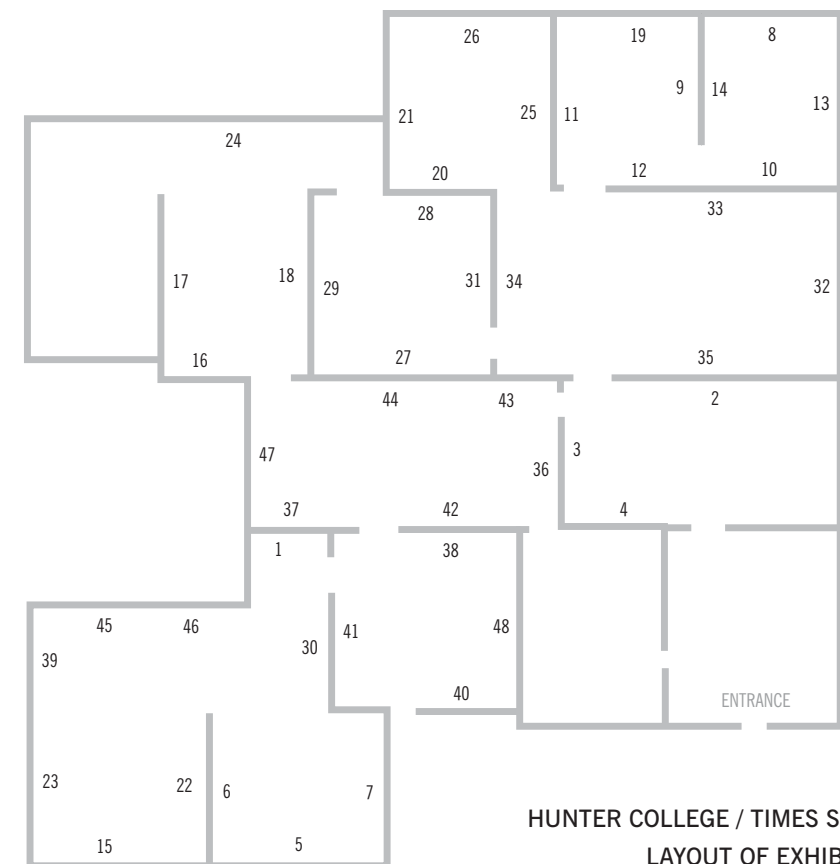
46. *Untitled*, 1/13/7 x 16/13/4 x 7/13/5 x 25/13/6, 2010, 84 x 84 inches



47. *Untitled* 7/25/6 x 11/25/7/ x 25/25/6, 2010, 7 x 14 feet



48. *Untitled*, 11/25/7 x 21/256 x 25/25/6, 2010, 7 x 14 feet



HUNTER COLLEGE / TIMES SQUARE GALLERY
LAYOUT OF EXHIBITION



Robert Swain in his studio, 2009
Photograph by Yao Zu Lu

COLOR AS CONTENT IN PAINTING

Color is a form of energy derived from the electromagnetic spectrum that stimulates our perceptual processes and is instrumental in conveying emotions. In some instances, color is culturally encoded, projecting content through symbolism or associations. The origin for such references are found in the way that the energy (wavelengths), from a particular color, generates feeling; a physiological change produced by the wavelength (energy), of a particular color or colors. The energy which emanates from green is distinctly different from the wavelengths that define red. In some cultures, pure red is associated with danger. Feelings and attitudes created by the aggressive, radiate energy, which is unique to the red part of the spectrum. When pure red is altered, its emotional attributes change, as in the stability associated with red earth colors, or the whimsical fluctuation produced by pink. In this sense, color transmits feeling(s) through the perception of energy (wavelengths) from the electromagnetic spectrum. Freed from cultural restraints, red can be experienced by itself as a phenomenon, which possesses substantial content. When red is placed next to green, the contrast is heightened, as M. E. Chevreul has observed, and the experience resides in the energy generated by the convergence of these unique spectral wavelengths.

© Robert Swain

Robert Swain
57 Leonard Street
New York, NY 10013

(212) 925-4656
rswain@nyc.rr.com

www.robertswainnyc.com

RESUME SUMMARY

Robert Swain was born on December 7, 1940 in Austin, Texas. He received a BA degree from the American University in Washington, D. C. in 1964. He has travelled and worked in Central America (1956 – 1957), as well as having lived and studied in Europe (1961-62).

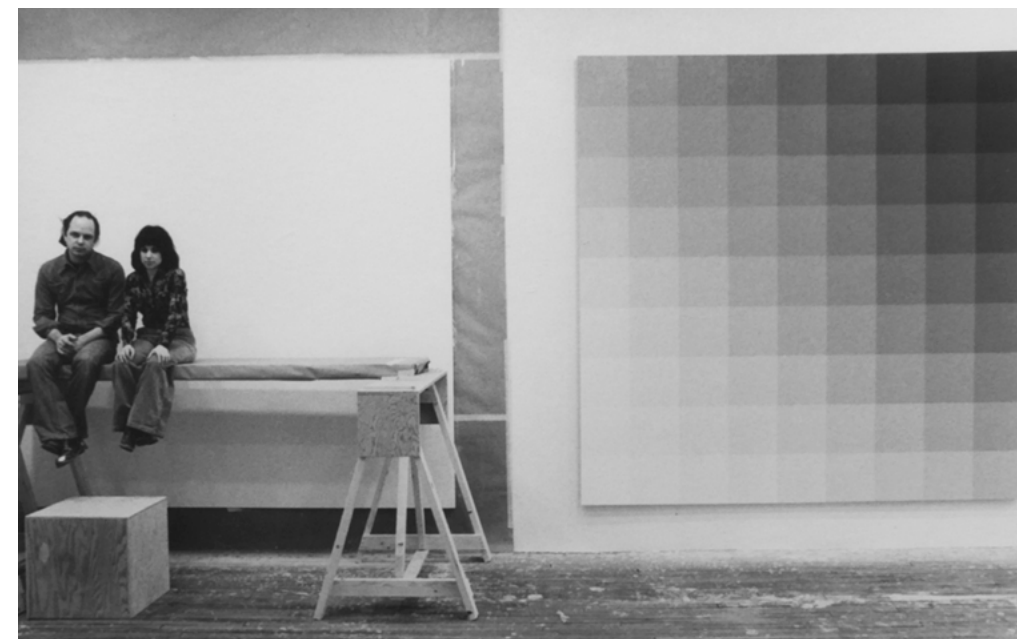
Since residing in New York City from 1965, he has had sixteen one-artist exhibitions, including two major museum shows; the first at The Everson Art Museum in Syracuse, New York (1974) and the other at The Columbus Gallery of Fine Arts in Columbus, Ohio (1975-76). In addition, he has shown in over sixty group shows, including The Corcoran Gallery of Art, The Museum of Modern Art, The Whitney Museum, The Albright-Knox Art Gallery, and The Metropolitan Museum of Art, to name a few of the twenty-one major museums in which he has exhibited. In 1968 he was included in The Corcoran Gallery of Art's Thirty-First Biennial and again in 1998 for The Corcoran Gallery of Art's Forty-Fifth Biennial. In 2010 a major exhibition was held in the Hunter College / Time Square Gallery, curated by Gabriele Evertz, entitled, *Visual Sensations, The Paintings of Robert Swain: 1967 – 2010*. During the same year an exhibition was held at Minus Space, curated by Matthew Deleget entitled *Robert Swain: Primary Research*.

Mr. Swain has been the recipient of a grant for painting from the John Simon Guggenheim Foundation in 1969, a CAPS grant (painting), from the State of New York, in 1982, and two grants from the National Endowment for the Arts (painting); the first in 1976, and again in 1989. In February of 1998, The College Art Association awarded Mr. Swain with, the *Distinguished Teaching of Art Award*. Mr. Swain has given numerous visiting artist lectures, served on various fine art juries and participated in many panel discussions, such as the Artist's Panel at The Museum of Modern Art, entitled Tony Smith: *Artists' Responses* (1998) and, *Seeing Red, Part III: Color as an Experience: A Two-Day Symposium on Contemporary Nonobjective Painting and Color Theory*, at the Goethe-Institut Inter Nationes, New York (2003).

In conjunction with these activities, he has done ten major commissions and architectural installations. Among these are paintings commissioned by Skidmore, Owens and Merrill, New York, for the Schering Laboratories in Bloomfield, New Jersey, and another at the direction of the architectural firm of I.M. Pei, New York for Johnson & Johnson, New Brunswick, New Jersey. In addition, he completed a major commission for The University of Buffalo, in their concert hall, on the North Campus at Amherst, Buffalo, New York, (8' X 61').

He is represented in over 284 private and public collections, including The Albright-Knox Art Gallery, The Corcoran Gallery of Art, The Detroit Institute of Art, The Virginia Museum of Fine Arts, The Milwaukee Art Center, The Everson Art Museum, The Denver Art Museum, The Columbus Gallery of Fine Arts and The Metropolitan Museum of Art.

Robert Swain's paintings can be seen on his website: www.robertswainnyc.com



Robert Swain in his studio with his wife Nanny, c.1960s



